

BUDGET 2018/19

IMPORTANT INFORMATION FOR PENSIONERS AND SENIORS

The WA state government has recently changed the way that pensioner and seniors rate rebates are calculated.

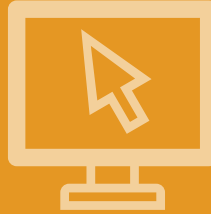
To be eligible for a concession, an applicant must be:

- the owner and reside in the property on 1 July of the rates year; and
- in receipt of a pension or hold a valid Pensioner Concession Card or State Concession Card; or
- in receipt of a valid Senior's Card or Commonwealth Seniors Health Care Card.

From 1 July 2018, the rates rebate available to eligible pensioners is capped at a maximum of \$750. Pensioners may apply to defer those rates.

From 1 July 2018, the rebates for Seniors Card holders on Local Government rates will be capped at \$100 per household.

This is not a decision of our Local Government. The City does not administer the laws in regards to pensioner concessions.



REGISTER FOR eRATES

GO PAPERLESS

Register for eRates to receive future rates notices and instalment reminders by email.

Rate notices and instalment reminders will be delivered direct to your inbox and you can choose to pay with any of the payment options available - have your assessment number from your current rate notice handy when you register.

www.erateswa.com/southperth

Civic Centre
9474 0777

Cnr Sandgate St and South Tce,
South Perth WA 6151

www.southperth.wa.gov.au



City of
South Perth



MESSAGE FROM THE MAYOR

In developing the 2018/19 Annual Budget, Council were conscious of our community's expectations in relation to household budgets, while also responding to the need to provide a diverse range of high quality services and essential infrastructure to our community.



The Council recognises that effective financial management and good stewardship of its assets are among the most important responsibilities the City performs for the community. We understand that rates are a significant cost for property owners and that you want assurance that Council is managing its budget well.

Guided by principles of business excellence, Councillors spent considerable time working with the City's administration to develop this year's budget. With an allocated capital expenditure of \$19.96 million, the budget focuses on delivering community benefits to all ratepayers through the provision of key services, infrastructure, community buildings, parks and reserves. It provides for new facilities while also supporting responsible spending on roads, paths and drainage infrastructure, water-wise initiatives, reticulation, park and playground upgrades.

We undertook a considered and sustainable approach to financial management in this budget to deliver on the themes identified through the community visioning and strategic planning processes which reflect the priorities and aspirations of our community. We worked towards providing tangible benefits at an affordable level to our community while delivering maximum value from each dollar spent.

In 2018/19 the rate increase for an average property in the City of South Perth is 1.6% which is at the lower end of the scale when compared to other metropolitan local governments. Local governments with lower rates typically have a large industrial or commercial rate base.

In comparison, commercial properties in the City represent less than 12% of the total rate base, which means we rely heavily on residential rates as a source of income.

The City has one of the lowest domestic rubbish service charges in the Perth metropolitan area however a significant cost pressure has impacted on the domestic rubbish service charge for the coming year and as such, the fee will increase from \$280 (2017/18) to \$305 (2018/19), remaining one of the lowest of all metropolitan local governments. This increase is a direct result of China's policy to limit the amount of recyclable materials the country accepts, with charges increasing more than 800% per tonne in some instances.

On behalf of Council, I present the 2018/19 Annual Budget to our community. We pride ourselves on delivering a responsible, value for money budget which demonstrates Council's desire to maintain the City of South Perth as a progressive city as we work to create our vision for the future.

This brochure is aimed to help you better understand the need for rates, what your rates pay for and how rates are calculated.

Thank you for choosing the City of South as your home.

A handwritten signature in black ink that reads "Sue Doherty". The signature is fluid and cursive, written over a white background.

Sue Doherty, Mayor



HOW MY RATES ARE CALCULATED

Rates for properties in the City are based on the Gross Rental Value (GRV) of the property. GRV is an independent determination of the likely annual return on a property after the deduction of rates and land taxes. Your property's GRV is supplied to the City by the State Valuer General through Landgate.

Every property within the City is valued at a date set by the Valuer General and this is referred to as the Date of Valuation. Rating valuations are therefore assessed at a 'snapshot in time' reflecting the property market for the City at this date. The GRV is calculated every three years. The last revaluation was conducted during 2015/16 and came into effect on 1 July 2017.

The rates are determined by applying the adopted rate in the dollar (6.6612 cents) to the GRV of each property to set the rates payable.

A property owner may lodge an objection against the valuation of a property within 60 days of the date of issue of a rate notice. Please go to the Landgate website at www.landgate.wa.gov.au or call them on 9273 7373 for more information.

Emergency Services Levy

The Emergency Services Levy (ESL) is a compulsory charge for all property owners, issued by the State Government.

The ESL funds WA's fire and emergency services including fire stations, volunteer fire brigades, State Emergency Service (SES) units, the Volunteer Marine Rescue Service and the Volunteer Emergency Service units.

Local governments are required to include the levy in their rates accounts and collect it on behalf of Department of Fire and Emergency Services (DFES). In 2018/19 the levy will increase by 9.71% for residential properties.

For more information contact DFES at dfes.wa.gov.au

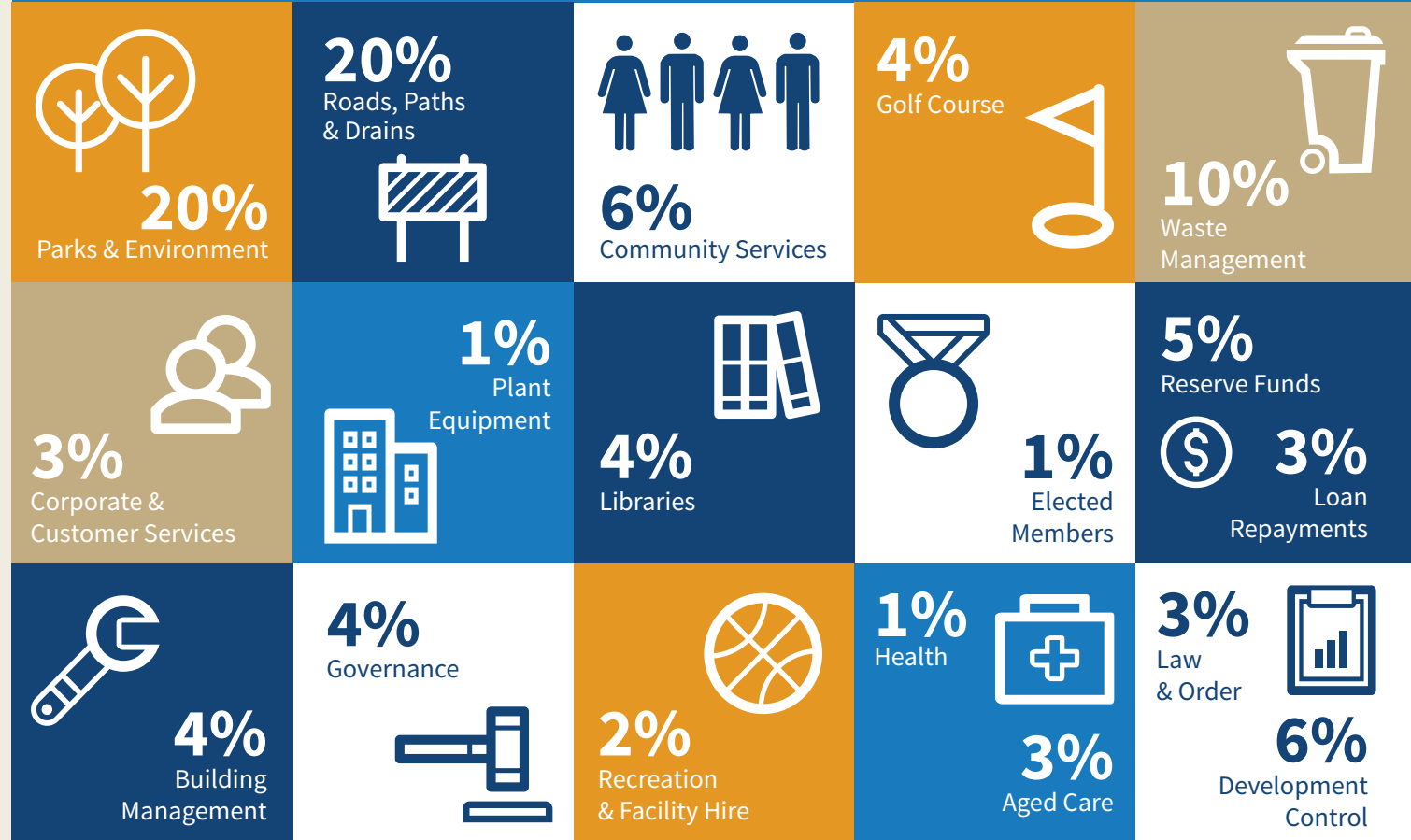
Rubbish Service Charge

The Rubbish Service Charge provides for weekly rubbish and fortnightly recycling services. This is supplemented by two green waste kerbside collections, one hard waste kerbside collection and three free entries to the City's Recycling Centre for all resident ratepayers per year. Recycling Centre entry vouchers are sent out with your rate notice.

WHERE THE MONEY IS SPENT

We believe that it is important that the community understand how their rates are being spent.

In addition to the many services and facilities that we provide, the City also advocates on your behalf to state and federal governments to secure their support and funding for larger initiatives such as a railway station, major transit routes, river walls and other essential community infrastructure.



BUDGET HIGHLIGHTS



CONNECT SOUTH

Connect South is a \$7.5 million major project to enhance and invigorate the Mends Street precinct in South Perth.

In 2016, the City successfully secured \$2.5 million in Federal Government funding from the National Stronger Regions Fund (NSRF) to match the City's contribution of \$5 million across two financial years.

A total of \$4 million is allocated in this budget for the implementation of stage one of the project which will see the development of a piazza on the Mends Street foreshore and minor upgrades to Mends Street North. Works are scheduled to be completed by December 2019.



INFRASTRUCTURE

- \$2.74 million roadworks; resurfacing and rehabilitation
- \$1.9 million park renewal and upgrades
- \$598,100 traffic management renewals and upgrades
- \$524,100 path installation, renewal and upgrades
- \$265,000 drainage improvements.

COMMUNITY AND SPORTING FACILITIES

- \$230,000 Neil McDougall park toilets
- \$160,000 Kindergarten upgrade works
- \$150,000 Old Mill and Cottage House roof replacement and air conditioning
- \$105,000 Manning Senior Citizens Centre air conditioning
- \$100,000 sports oval floodlighting strategy implementation
- \$40,000 Collins Street Centre Community Hall improvements
- \$30,000 Hazel McDougall House Milking Shed improvements.

ERNEST JOHNSON RESERVE REDEVELOPMENT

The first stage of this major project has seen the creation of a contemporary, purpose-built community hall and pavilion on Ernest Johnson (EJ) Reserve in South Perth. Completed at the end of 2017, the integrated facility provides a modern home for community groups including Scouts, Girl Guides and playgroups as well as sporting clubs and other groups.

This budget allocates \$1.765 million for the implementation of stages two and three of the project which will include tree planting and landscaping works, installation of new synthetic cricket pitches, a new playground, exercise equipment, social area, lighting and signage. Tree planting will provide additional shade for the new facility, playground, seating and picnic areas.

The project is a key initiative in the City's Strategic Community Plan and Corporate Plan.

ENVIRONMENT

- \$650,000 Olives Reserve upgrade
- \$205,000 playground upgrades
- \$140,000 street tree planting and infill program
- \$123,000 streetscapes renewal program
- \$94,000 water management initiatives
- \$90,000 senescent (ageing) street tree removal and replacement
- \$54,000 Mount Henry Spit revegetation.

