



Agency Advisory #5

COVID-19 (Coronavirus disease)

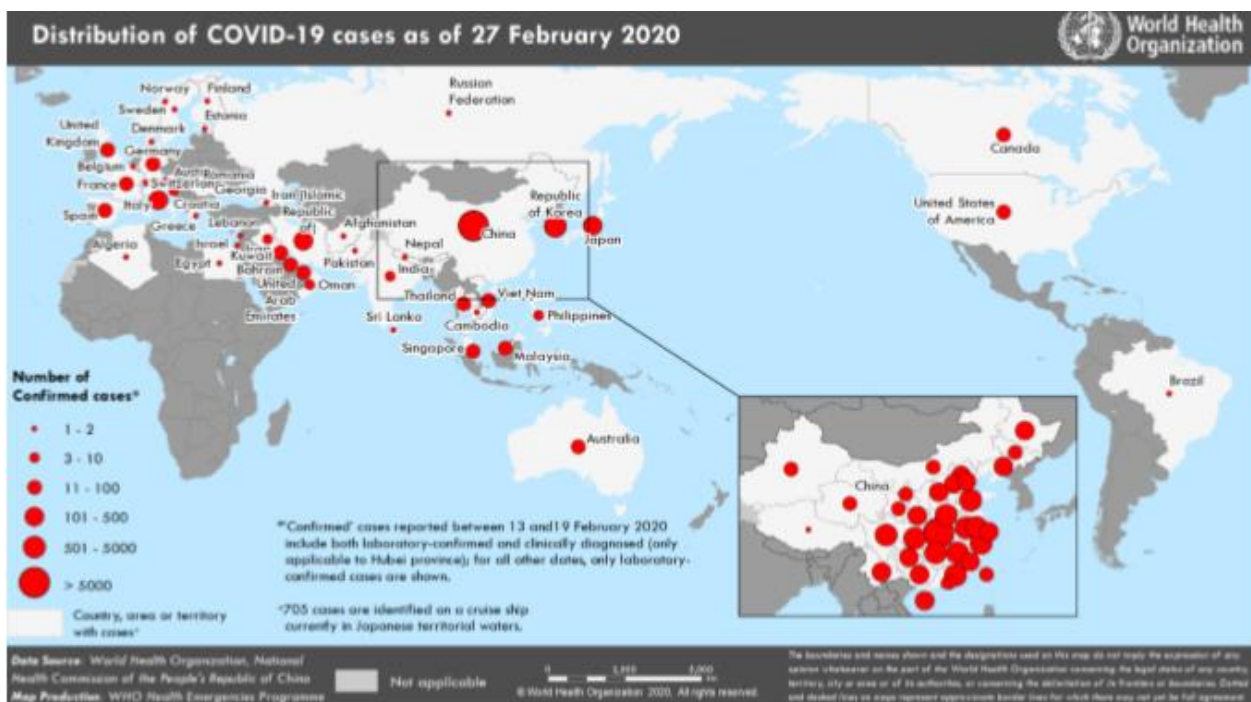
Friday 28 February 2020 14:00 Hours

This advisory has been authorised by the PHEOC Coordinator, Dr Clare Huppatz

New Information

- As of 28 February 2020, there are **two** confirmed cases of COVID-19 in WA. Both cases are associated with the Diamond Princess cruise ship. An additional **511** people tested for COVID-19 in WA have returned a negative result.
- As of 06:30 28 February 2020, **24** confirmed cases have been detected in Australia: four cases from NSW, eight cases from QLD, three cases from SA, **seven** cases from VIC, and **two** cases from WA.
- According to the most recent [WHO Situation Report](#) dated 27 February 2020, in the past 24 hours:
 - Worldwide: **746** new confirmed cases were reported (**82,294** total)
 - In China: **439** new confirmed cases were reported (**78,630** total); **29** new deaths were reported (**2,747** total)
 - Outside China: **746** new confirmed cases were reported (**3,664** total). Nine new member states reported cases (Brazil, Denmark, Estonia, Georgia, Greece, Norway, Pakistan, Romaina and North Macedonia). **13** new deaths outside China were reported (**57** total).
- [World Health Organization Director General's opening remarks](#) at the media briefing on COVID-19 (24 Feb 2020).
- [Press conference about coronavirus \(COVID-19\) with the Prime Minister](#), Treasurer and Chief Medical Officer (25 Feb 2020)
- On 27 February 2020, the Prime Minister announced the activation of the '[Australian Health Sector Emergency Response Plan for Novel Coronavirus \(COVID-19\)](#)'.
- In WA, the Chief Health Officer has formally escalated the [Infectious Disease Emergency Management Plan](#) to INITIAL ACTION PHASE and the [State Hazard Plan Human Biosecurity](#) has been activated to STANDBY PHASE.
- The Commonwealth has extended the following travel restrictions for people entering Australia, until **6 March 2020**:
 - all travellers who have left or transited through mainland China on or after 1 February 2020 must self-quarantine until 14 days after leaving China.
 - Australian citizens, permanent residents and their immediate family who have left or transited through mainland China will be able to enter Australia, as will airline crews who have been using appropriate personal protective equipment.
 - foreign nationals (excluding permanent residents of Australia) will not be allowed to enter Australia until 14 days after they have left or transited through mainland China.

- **COVID-19 Testing Guidelines** - Australian testing guidelines have been expanded to recommend clinicians consider testing people with a clinically compatible illness who travelled to any of the following countries in the 14 days before onset of symptoms: Hong Kong, Indonesia, Iran, Japan, Singapore, South Korea, Thailand, Italy, Cambodia. The recommendation does not apply to passengers who have only been in transit through an airport in these countries.
- All travel alerts regarding COVID-19 can be followed at [Smartraveller](#). Department of Foreign Affairs and Trade travel advice in summary:
 - Travel Mainland China - 'level 4 - do not travel'.
 - Northern Italy (Lombardia and Veneto regions) - 'level 2 - exercise a high degree of caution'.
 - Japan and South Korea - 'level 2 - exercise a high degree of caution'. It is also advised that travellers reconsider the need to travel to Daegu and Chengdu due to significant outbreaks of COVID-19 in those cities.
 - Iran - On 25 February, DFAT updated the travel advice to Iran to advise of a heightened risk of sustained local transmission of COVID-19, and recommended travellers depart Iran while commercial options are available. The overall travel advice remains unchanged at 'level 3 – reconsider your need to travel'.
 - Mongolia - 'level 2 - exercise a high degree of caution'.
- [WA Chief Health Officer statement COVID-19 update #6](#)
- Australian Health Protection Principal Committee ([AHPPC](#)) [statement on coronavirus \(COVID-19\)](#)
- The diagram below from the WHO illustrates the distribution of COVID-19 cases globally as of 27 February 2020.



Summary of other key information

- On 30 January 2020, the World Health Organization (WHO) International Health Regulations Emergency Committee declared the outbreak of COVID-19 a Public Health Emergency of International Concern (PHEIC).
- In Western Australia the Communicable Disease Control Directorate within the WA Department of Health Public and Aboriginal Health Division is leading the response to COVID-19 with the instigation of the Public Health Emergency Operation Centre (PHEOC), in collaboration with the State Health Incident Coordination Centre (SHICC), and with support from the Population/Public Health Units and Health Service Providers.

- The Australian Government has assisted 170 passengers of the Diamond Princess to depart Japan. Passengers will be required to undertake a further 14-day quarantine period at the Howard Springs Accommodation Village, Darwin. The Australian Embassy in Tokyo continues to provide consular support to 47 passengers who tested positive to COVID-19, those who chose to remain behind in Japan, and those who have opted to finish quarantine on the Diamond Princess. Any Diamond Princess passengers who were not on the assisted flight will not be allowed on other flights to Australia until 4 March 2020.
- The best way to protect yourself and others against COVID-19 is to practise good hygiene. WA Health does not recommend the use of facemasks for the general community (who have no symptoms of respiratory illness), to prevent the risk of contracting COVID-19. See our [fact sheet](#) for further information.
- WA Health has developed a [FAQ](#) fact sheet that is regularly updated as information changes.
- Biosecurity officers from the Australian Government Department of Agriculture, Water and the Environment, with the support of WA Health staff, continue to meet all passengers arriving in Australian airports who have travelled to mainland China in the past 14 days, undertaking assessment and providing information on testing and isolation as appropriate.

Self-quarantine (self-isolation) guidance

If you have travelled from mainland China or been in close contact of a confirmed case of COVID-19, special restrictions apply.

Who needs to self-quarantine?

To help limit the spread of COVID-19, you must self-quarantine in the following circumstances:

- If you have left or transited through mainland China in the last 14 days, you must isolate yourself for 14 days from the date of leaving mainland China.
- If you have been in close contact with a proven case of COVID-19, you must isolate yourself for 14 days from the date of last contact with the confirmed case.

Isolation Guide ([Commonwealth Department of Health COVID-19 isolation guide](#))

More information

National Coronavirus Health Information Line: 1800 020 080

- International information and updates: [World Health Organization](#)
- [WHO COVID-19 Rolling Updates](#)
- Various resources for employers, schools and higher education, health, aged care, childcare, transport, travel and hotel sectors are available at the following websites:
 - ★ [WA Department of Health](#)
 - ★ [HealthyWA](#)
 - ★ [Commonwealth Government](#)
 - ★ [COVID-19 MythBusters](#) (World Health Organisation)

Next advice - The next agency advisory will be issued on **Tuesday 3 March 2020**.

© Department of Health 2020

Copyright to this material is vested in the State of Western Australia unless otherwise indicated. Apart from any fair dealing for the purposes of private study, research, criticism or review, as permitted under the provisions of the *Copyright Act 1968*, no part may be reproduced or re-used for any purposes whatsoever without written permission of the State of Western Australia.

health.wa.gov.au