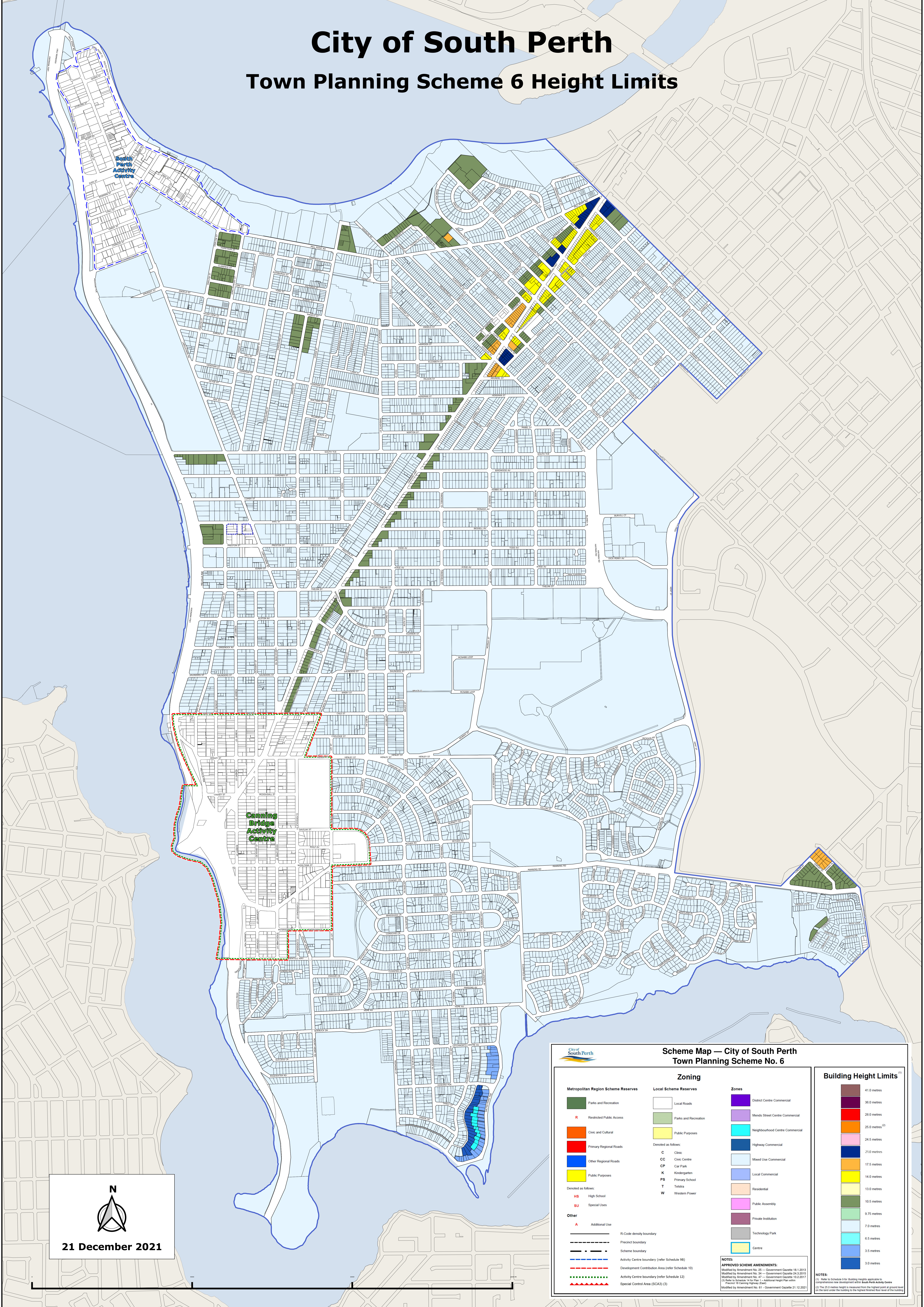


# City of South Perth

## Town Planning Scheme 6 Height Limits



N  
  
 21 December 2021

**Scheme Map — City of South Perth  
Town Planning Scheme No. 6**

Zoning		Building Height Limits <sup>(1)</sup>	
<b>Metropolitan Region Scheme Reserves</b>	<b>Local Scheme Reserves</b>		41.0 metres
Parks and Recreation	Local Roads		36.0 metres
Restricted Public Access	Parks and Recreation		28.0 metres
Civic and Cultural	Public Purposes		25.0 metres <sup>(2)</sup>
Primary Regional Roads	Denoted as follows:		24.5 metres
Other Regional Roads	C Clinic		21.0 metres
Public Purposes	CC Civic Centre		17.5 metres
Denoted as follows:	CP Car Park		14.0 metres
High School	K Kindergarten		13.0 metres
Special Uses	PS Primary School		10.5 metres
Additional Use	T Telstra		9.75 metres
	W Western Power		7.0 metres
			6.5 metres
			3.5 metres
			3.0 metres

**Other**

Zones	Building Height Limits <sup>(1)</sup>
District Centre Commercial	41.0 metres
Mends Street Centre Commercial	36.0 metres
Neighbourhood Centre Commercial	28.0 metres
Highway Commercial	25.0 metres <sup>(2)</sup>
Mixed Use Commercial	24.5 metres
Local Commercial	21.0 metres
Residential	17.5 metres
Public Assembly	14.0 metres
Private Institution	13.0 metres
Technology Park	10.5 metres
Centre	9.75 metres
	7.0 metres
	6.5 metres
	3.5 metres
	3.0 metres

**NOTES:**  
**APPROVED SCHEME AMENDMENTS:**  
 Modified by Amendment No. 20 — Government Gazette 18.1.2013  
 Modified by Amendment No. 24 — Government Gazette 24.3.2015  
 Modified by Amendment No. 47 — Government Gazette 10.2.2017  
 (1) Refer to Schedule 9 for Building Heights applicable to comprehensive new development within South Perth Activity Centre  
 (2) The 25.0 metres height is measured from the highest point at ground level of the lot under the building to the highest finished floor level of the building