

CITY OF SOUTH PERTH LOCAL HERITAGE INVENTORY

Management
Category

B

PLACE RECORD FORM

Prepared by *Heritage Today*, March 2000
Most recent update by City of South Perth, November 2015

Place No: Co 2 Pine Trees at Collier Park Golf Course



*A view of some of the Pine Trees at Collier Park Golf Course.
(Gina Fraser, City of South Perth. January 2007.)*

LOCATION

Name of Place	<i>Pine Trees at Collier Park Golf Course</i>
Other names	Collier Pine Plantation
Address	
Suburb	Como
Local Government Authority	City of South Perth
Scope of listing	<i>Pinus pinaster</i> trees throughout the golf course

LISTINGS BY OTHER BODIES

Name of Body	Reference No.	Grade of Listing	Date
Heritage Council of Western Australia	4820	Data base only – not listed	-

LAND DESCRIPTION

Reserve No.	Lot	Location No.	Plan/Diagram	Vol/Folio
36435, 38794, 1947291	-	Canning 3817, 3436, 3761	36435, 218457, 190445	

PERIOD	Inter-War
Planting Date	c1925 - 1930
Source / Details	Floreay, Cecil C. <i>Peninsular City: A Social History of the City of South Perth</i> , City of South Perth, WA, 1995.

USE(S) OF PLACE

Original	Pine plantation
Present	Remnant trees amidst development
Other / former	Collier Pine PLantation

HISTORICAL NOTES

The Collier Pine Plantation was planted out after 1925, with the expectation that the trees would be cut down in the 1960s, and that the land would then be used for public purposes. The original area of trees was 900 acres, and the plantation was divided roughly in half by the boundary between the City of Perth and the City of South Perth. At the time there was some opposition to the scheme, with allegations that seedlings had been planted too close together, and that no weeding was being undertaken between rows, resulting in the death of 95% of the first seedlings. However, the plantation eventually took off, with the trees growing to maturity over the next 30 years.

To relieve the housing shortages after 1947, homes were built close to the northern and eastern boundaries of the plantation. Housing in Collier and Como expanded around the plantation. In 1957, the first institution was built within the plantation, namely Ngal-A, a mothercraft centre, initially for unwed mothers.

By 1962 the original plantation area had been reduced from 900 acres to 600. A number of institutions grew up in the plantation area over the years that followed, including Bentley High School, Rowethorpe Retirement Village, Swan Cottages, Como High School, Western Australian Institute of Technology (later Curtin University), and Penrhos College. Other portions of the Collier Pine Plantation were also used for government-provided housing at Karawara, the City's Collier Park Retirement Village, South Perth Lawn Tennis Club, Forestry Department (later known under a succession of names), and the Department of Agriculture. In the late 1980s the Collier Park Golf Course was developed on a large parcel of land bordered by Thelma Street, Kent Street and Hayman Road. The *Pine Trees at Collier Park Golf Course* which were preserved are an attractive reminder of the earlier Collier Pine Plantation.

DESCRIPTION

The Collier Park Golf Course was built on land previously planted with pine trees, known as the Collier Pine Plantation. When the Golf Course was developed in the late 1980s many of the trees were preserved, mainly along the boundary of the Golf Course property. The *Pine Trees at Collier Park Golf Course* generally have long straight trunks, with the greenery clustered at the top - in the manner of plantation pine trees.

ASSOCIATIONS**ASSOCIATION TYPE**

--	--

HISTORIC THEME / Sub-theme**CATEGORIES OF SIGNIFICANCE**

Occupations/ <i>Timber</i>	Aesthetic
	Historic
	Representative

RATING AND ASSESSMENT**High****Low**

Aesthetic value (streetscape, setting)	1	2 ✓	3	4	5
Rarity value	1	2 ✓	3	4	5
Value as part of a group/precinct	1 ✓	2	3	4	5
Condition	1	2 ✓	3	4	5
Integrity	1	2	3 ✓	4	5

STATEMENT OF SIGNIFICANCE

The *Pine Trees at Collier Park Golf Course* have aesthetic, historic and representative cultural heritage significance. They are some of the last remnants of the original Collier Pine Plantation, established in the late 1920s. The plan was to harvest the trees by the 1960s, and then release the land for public purposes. A number of institutions have been built in the area which was formerly the plantation and selected trees have been retained. They provide an aesthetic backdrop for a wide range of institutional buildings, including Curtin University, Penrhos College, various government buildings and the Collier Park Golf Course, among others.

MANAGEMENT RECOMMENDATIONS**Management Category B : Considerable significance**

Conservation essential. Reflects the highest level of local cultural heritage significance. Very important to the heritage of the locality. High degree of integrity and authenticity. Demolition or significant alteration to a place in Management Category B of the Heritage List is not permitted. Any alterations or additions are to be guided by a Conservation Plan, if any, and reinforce the heritage values of the place.

SUPPORTING INFORMATION / BIBLIOGRAPHY

- Florey, Cecil C. *Peninsular City: A Social History of the City of South Perth*, City of South Perth, WA, 1995.

HISTORY OF HERITAGE LISTING BY CITY OF SOUTH PERTH

	Date Adopted by Council
Initial listing in MHI	December 1994
Update of MHI	February 1996
Update of MHI	December 1996
Update of MHI	December 1997
Review of MHI by <i>Heritage Today</i>	June 2000
Update of MHI	June 2002
Update of MHI	March 2003
Review of MHI by <i>Heritage Today</i>	February 2006
Interim Heritage List – Policy P313 ‘Local Heritage Listing’	April 2013
Updated in renamed LHI	November 2015



*Pine Trees at Collier Park Golf Course.
(Heritage Today 1999)*

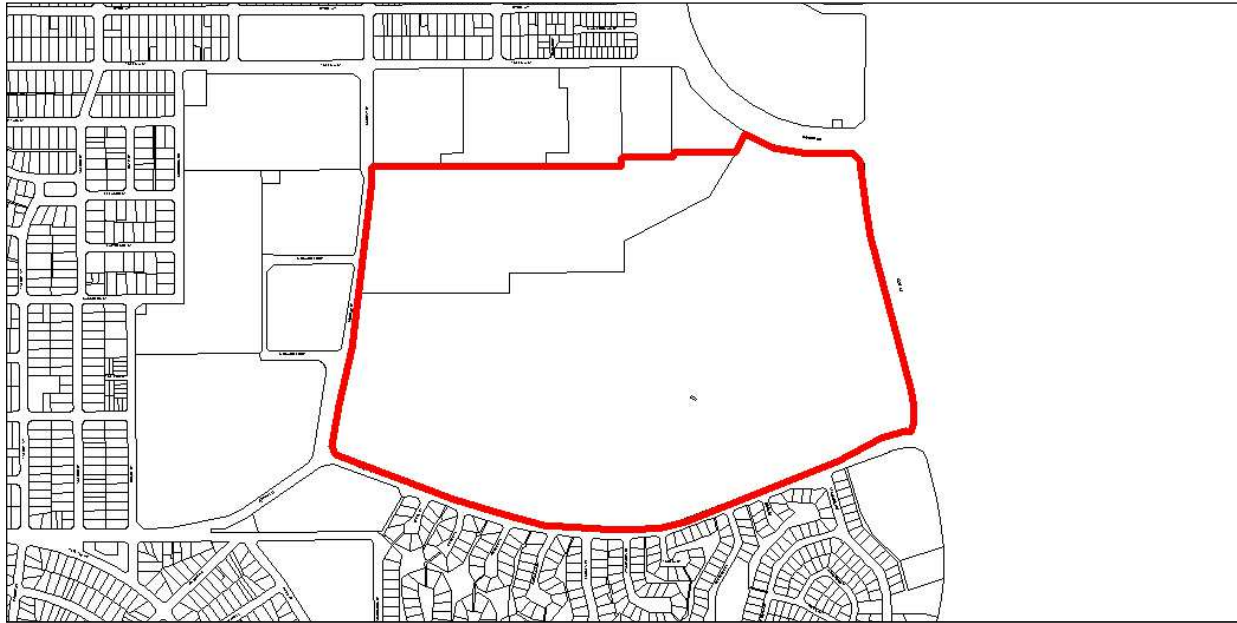


A view of some of the Pine Trees at Collier Golf Course.
(Gina Fraser, City of South Perth. January 2007.)



A view of the former Collier Pine Plantation, with preparations for the construction of Thelma Street in the foreground, c1950.
This photo shows the density of planting of the plantation.
(Picture South Perth Photograph Collection)

LOCATION MAP



(Digital Cadastral Data supplied by Landgate, WA. P295)