

# ARTWALK MINDEERUP

South Perth, Western Australia

FREE  
MAP



City of  
South Perth



# MINDEERUP

Meaning 'place of the shore'.



The piazza area was created as part of the City of South Perth's Connect South project, which was one-third funded by a \$2.5 million grant from the Australian Government's National Stronger Regions Fund. The vision for this area was to create a gateway to the Mends Street Precinct.

To pay respect to the Traditional Owners, the site was named Mindeerup, the traditional Whadjuk Noongar name for the area meaning 'place of the shore'.

Mindeerup was opened to the public in November 2019.

The numbat and frilled neck lizard canopies were designed to provide shade and shelter and to raise awareness of the nearby Perth Zoo.

9474 0777

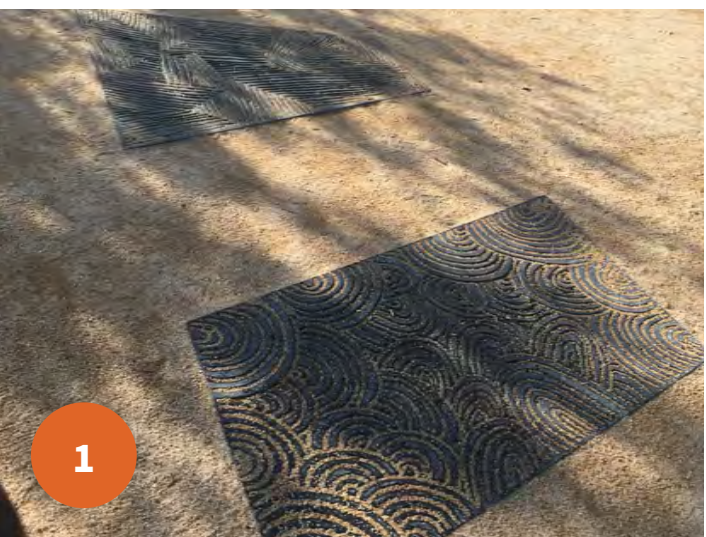
[enquiries@southperth.wa.gov.au](mailto:enquiries@southperth.wa.gov.au)

[#discoversouthperth](https://www.southperth.wa.gov.au/discover)

[southperth.wa.gov.au](https://www.southperth.wa.gov.au)







1

The Artwalk starts at the grass circle among the trees at Mindeerup.

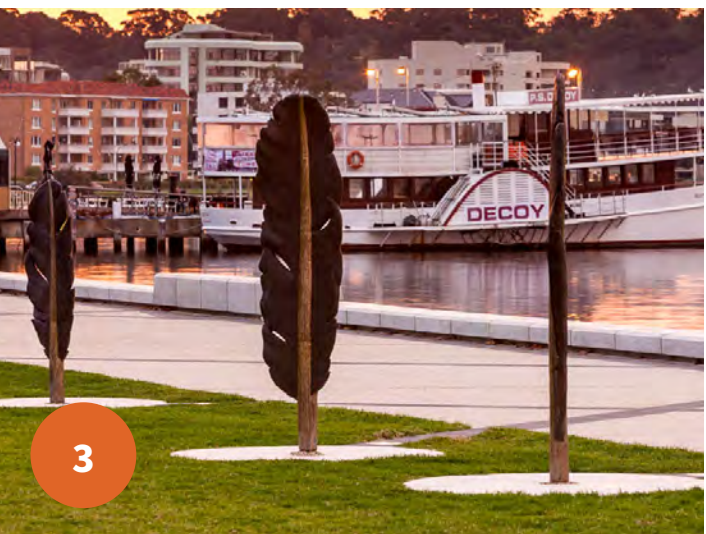
In this quiet part of Mindeerup you will find *Yedi Waangki-ny* (Songlines), by Yondee Shane Hansen with Art+ Coordination. These subtle, ground-level relief sculptures have been developed from the sand painting that Whadjuk Noongar artist, Yondee Shane Hansen learned from his father and grandfather. The imagery depicts features of Country that have significance and meaning for Traditional Owners of this place, including water holes (Gnamma), storm clouds (Maar Borang-iny) and emu feathers (Weitj Djwiny).



2

Walk eastwards (50m) towards the Mends Street Jetty to find the first group of Meerkat sculptures.

This group of five sculptures are part of the *Mends Street Mob* by Mikaela Castledine. Two other groupings can be found on seating elsewhere in Mindeerup, and along Mends Street. The Meerkats are among the most popular residents at Perth Zoo today, which has been a major attraction bringing people to this part of South Perth since it opened in 1898. With their inquisitive stances and social nature, these little sculptures welcome present-day explorers and visitors to South Perth.



3

Continue eastwards (165m) along the river's edge, past Mr Walker's, until you reach the bronze feathers

This sculptural work titled *Resonance* by Amanda Shelsher takes the form of three bronze feathers that remind us of the abundance of Black Swans and other birdlife that previously lived on the river when Willem De Vlamingh named the river on European maps in the late 1600s. If you look more closely, the spines of each feather have been engraved with historical quotations that provide glimpses and insights about the past, present and future of this place.



4

Continue eastwards (70m) along the river's edge until you reach the large aluminium sculpture.

This abstract sculptural work by Ben Jones, Angela McHarrie and Tony Jones is titled *R/evolve* and has been inspired by movement and progress associated with the development of transport on the South Perth peninsula. The work commemorates the ground-breaking, driverless electric vehicle, the RAC Intellibus®, in 2016. This is the latest transformative development in transportation in the City, preceded by the Narrows Bridge (1959), trams in the 1930s, and regular ferry services in the early 1900s.



5

Walk 180m west across the grass, or follow the footpaths back around the grass to the Western Power substation enclosure in carpark SPE4.

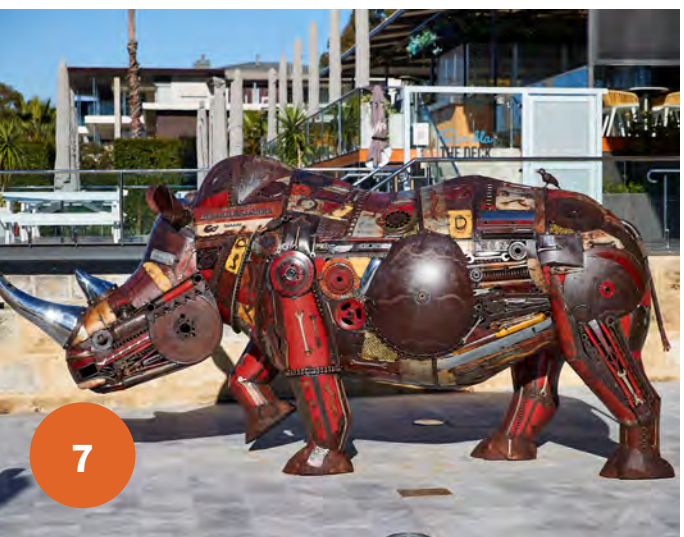
Rick Vermey's design for the screen around this enclosure is inspired by the experience of walking through native bushland and is titled *A Quiet Walk*. The plant forms emerge and fade from sight as you walk around the structure, a reminder of the fragility and transient beauty of the endemic flora that is becoming more elusive in the urban environment.



6

Turn west and walk 200m past the playground to the emu sculptures

*Promenading Emus* by Russell Sheridan depicts a family of emus out for a stroll on the Swan River waterfront. The emu is a distinctive bird that stands alongside the kangaroo on Australia's national Coat of Arms, but these sculptural ambassadors are also playful local characters and have been given fantastic facial expressions by the artist.



7

Walk (65m) west along the footpath to the shared traffic zone and cross the road (20m) to the rhino sculpture near the steps to Rambla on Swan.

*Sudan* is a sculpture by Jordan Sprigg that has been inspired by, and remembers, the world's last male Northern White Rhinoceros, who died in March 2018. This prominent piece is a powerful reminder of the plight of many species on the brink of extinction in the world and draws attention to the role of Perth Zoo in supporting the conservation of wildlife.



8

Walk (25m) west to the corner of Mends Street and South Perth Esplanade and look across the street at the awning above Miss Chows at the Echelon Apartments.

*Shoreline* is an integrated artwork by Stuart Green that takes its inspiration from the ripples, reeds and rushes that once lined the water's edge along the Swan River. The aluminium fascia panels have been creased and catch the light like tidal ripples in sand and shallow water, while the irregularly spaced vertical wooden elements, appear like strands of water plants.



9

Walk (135m) south along Mends Street until you reach the laneway behind the Windsor Hotel. From here look west, across the street and above the arcade entrance to see the eastern side of the Quest Apartment building.

Artist Paul Caporn and Architect Ahmad Abas collaborated to create this large scale artwork from brightly coloured porcelain basins, titled *100 Years, Even, L'art pour l'art*. The artwork makes a playful reference to a major turning point in art history, with Marcel Duchamp's exhibition of a urinal as a "ready-made" artwork (Marcel Duchamp, *Fountain*, 1917). The reference to "art for art's sake" may also remind us South Perth was home to an important and influential community of artists at the turn of the twentieth century, and continues to provide opportunity for contemporary artists creating public art.



10a

10b

Cross Mends Street at the pedestrian crossing to the western side and walk (30m) south to the alfresco seating area near BP Mends Street.

This mural, and the one at 16 Mends Street (in the laneway behind the Windsor Hotel), are the work of artist Joanna Brown. They have been inspired by the City's many attractive domestic and public gardens, greenspaces and natural areas. The mural in the BP seating area features a mix of exotic plants and natives commonly featured in the gardens of many South Perth homes. The mural at 16 Mends Street features native plants including the floral emblems of the Nation (wattle) and the State (kangaroo paw).



11

Continue (50m) southwards along Mends Street to the Mill Point Road intersection and turn west, walking (85m) along the footpath towards Harper Street.

The artwork *Pinwheels, Windmills and Weathervanes*, by Jennie Nayton - consists of cut, coloured and folded aluminium elements on three sides of the Southbank building at 98 Mill Point Road. The artwork makes engaging use of tessellating and interlocking patterns that echo the wind-catching sails of various spinning devices. It references the Old Mill and the City's industrial history, as well as South Perth's long history as a destination for leisure and recreation.



12

Continue walking (65m) westwards to the sculpture at the intersection of Mill Point Road and Labouchere Road, in front of the Aurelia Apartments.

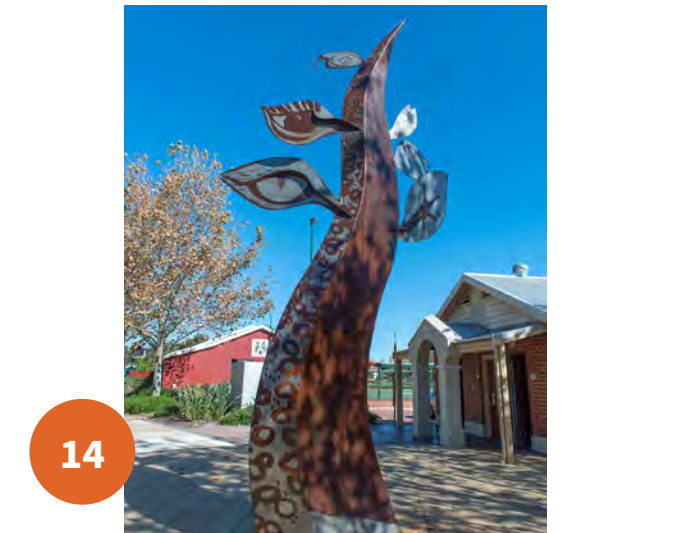
This sculpture and the wall-mounted sculptural elements on the podium of the Aurelia Apartments are titled *Aurelian Modulations* and have been created by Jon Tarry. These abstract works have been inspired by the contours and the natural passage of watercourses and rivers through the landscape, while the materials and forms represent the fluid movement and reflectivity of water.



13

Using the pedestrian crossings at the intersection, cross (70m) the intersection to the park near the Freeway entry, north of Bluewater Apartments.

This Stuart Green sculpture titled *Breeze* is one of the earliest pieces of public art in the City commissioned by a private developer. The form of the sculpture echoes the wind-catching sails of the watercraft on the Swan River, which were once a more common sight in South Perth. Its faceted, reflective surfaces also reference the play of light and movement of water in the river itself.



14

Walk (370m) south along the western side of Labouchere Road and cross at the pedestrian crossing near Perth Zoo. From the zoo entry, follow the path (230m) north into Windsor Park behind the tram.

This sculpture, titled *The Magic Tree* by Coral Lowry was commissioned for the City's redevelopment of Windsor Park in 2003. It is a symbolic form, playfully combining features of plants and animals and is a fitting landmark for this green space and key pedestrian link to the Perth Zoo and Botanic Gardens.



15

Walk (50m) towards the Perth Zoo carpark on Mill Point Road. The sculpture is seated under a tree to the right of the path.

This life-sized bronze sculpture titled *May Gibbs Inspiration*, by the Smith Sculptors, depicts a young May Gibbs, reading under a gum tree. The famous Australian author, illustrator and creator of the Gumnut Babies, lived with her family in South Perth at their home, 'The Dune' at the corner of what is now Mill Point Road and Harper Terrace. Though Gibbs published her iconic books after leaving South Perth, her experiences of Western Australian flora and her artist father Herbert William Gibbs were formative influences. Works by May and Herbert Gibbs from the City's collection are regularly displayed by the City of South Perth Historical Society at Heritage House.



16

Walk (330m) back to Mends Street and north to the central piazza space at Mindeerup.

This light and sound artwork, titled *Karl Kep Ngoornd-iny* (Fire and Water Dreaming) was created by Yondee Shane Hansen with Art+ Coordination. The artwork is a multi-sensory experience incorporating a sound-scape, lighting effects and projected imagery by the artist to share ancient stories and represent the cycles and rhythms of Country from a First Nations perspective. Whadjuk Noongar culture is at the start and the end of what we hope has been a great cultural experience for you on the artwalk at Mindeerup, South Perth.

**Special note:** The final artwork featured on this self-guided tour is a light and sound artwork that can only be seen at set times after dark (see the City's website for current times). We encourage you to come back to view this piece or start the artwalk in the late afternoon, enjoy dinner at one of the many dining options on Mends Street, and experience the show before heading home.

#### WHILE YOU'RE IN THE AREA



1

#### FERRY TRAM

Be transported back in time with a visit to the Ferry Tram. Once a running between Mends Street Ferry and Como Beach, this restored B-class tram was built in 1899 and was one of two trams operating in the area between 1922 and 1950. On the last Friday of each month, join the South Perth Historical Society as they share stories of the Ferry Tram's rich past.



2

#### HERITAGE HOUSE

Heritage House Cultural Centre at Windsor Park is a distinctive 1904 building that has been restored as an Art Museum and Gallery. Home to the May & Herbert Gibbs Collection, including works by May Gibbs, creator of the iconic Gumnut Babies; Snugglepot and Cuddlepie. Heritage House Cultural Centre hosts exhibitions and events throughout the year showcasing the history and heritage of the City of South Perth.

#### Ferry Tram and Heritage House opening hours

10am-4pm Friday  
1-4pm Saturday and Sunday.





## INTRODUCTION

Mindeerup is a gateway to all kinds of experiences on the South Perth Foreshore. Along with an unrivalled view of the Perth City skyline, the Swan River, green open spaces, Perth Zoo and the shopping and dining in Mends Street, this part of Perth is home to some great public art.

The Mindeerup Artwalk takes you on a self-paced guided tour of public art, starting and ending in the heart of Mindeerup. You will be introduced to works of contemporary art that tell stories of the world's oldest living culture using new materials and technologies. You will encounter captivating pieces that have won national awards, and see artworks by some of Western Australia's leading public artists. You will discover surprising and diverse objects and images, and learn about the local places, people and stories that have inspired them.

The City of South Perth has developed this Artwalk to share its growing open-air gallery of public art in and around Mindeerup and is committed to delivering high quality creative and cultural experiences that are freely available to be enjoyed by locals and visitors alike.

Please exercise care on the City's footpaths, cycleways and roads and ensure that you use marked pedestrian crossings and follow traffic signals at all times.

QUICK INFO	Total Distance = Approximately 1.75km			
	Time Required = Up to 1 hour at a moderate walking pace			
	Difficulty/Accessibility = The Artwalk is easy and universally accessible			
KEY		Public toilets		Artwork is up high
		Parking (please check signs for fees and times)		
		Return path		

For further information on the below artworks visit [southperth.wa.gov.au/publicart](https://southperth.wa.gov.au/publicart)

- |  |  |   |   |
|--|--|---|---|
| <div>1</div> <p><b>Yondee Shane Hansen with Art+ Coordination</b><br/><i>Yedi Waangki-ny (Songlines)</i>, 2020<br/>Cast jesmonite<br/>City of South Perth Public Art Collection</p>            | <div>5</div> <p><b>Rick Vermey</b><br/><i>A Quiet Walk</i>, 2020<br/>CNC routed trespa panels<br/>City of South Perth Public Art Collection</p>                    | <div>9</div> <p><b>Paul Caporn &amp; Amad Abas</b><br/><i>100 Years, Even: L'art pour l'art</i>, 2018<br/>Porcelain basins<br/>Collection of Quest Apartments</p>   | <div>13</div> <p><b>Stuart Green</b><br/><i>Breeze.</i>, 2001<br/>Stainless steel and powder coated steel<br/>Collection of Bluewater Apartments</p>  |
| <div>2</div> <p><b>Mikaela Castledine</b><br/><i>Mends Street Mob</i>, 2020<br/>Crocheted polypropylene, fabric hardener and stainless steel<br/>City of South Perth Public Art Collection</p> | <div>6</div> <p><b>Russell Sheridan</b><br/><i>Promenading Emus</i>, 2020<br/>Basalt fibre, kevlar, carbon fibre<br/>City of South Perth Public Art Collection</p> | <div>10</div> <p><b>Joanna Brown</b><br/><i>Mends Street Murals (BP Mends Street and 16 Mends Street)</i>, 2019<br/>Exterior paint<br/>Commissioned by City of South Perth with kind permission of the property owners.</p> | <div>14</div> <p><b>Coral Lowry</b><br/><i>The Magic Tree</i>, 2003<br/>Steel<br/>City of South Perth Public Art Collection</p>   |
| <div>3</div> <p><b>Amanda Shelsher</b><br/><i>Resonance</i>, 2016<br/>Cast bronze<br/>City of South Perth Public Art Collection</p>  | <div>7</div> <p><b>Jordan Sprigg</b><br/><i>Sudan</i>, 2021<br/>Recycled and reclaimed metal<br/>Collection of Rambla on Swan</p>                                  | <div>11</div> <p><b>Jennie Nayton</b><br/><i>Pinwheels, Windmills and Weathervanes</i>, 2016<br/>Laser cut and powder coated aluminium<br/>Collection of Southbank Building</p>   | <div>15</div> <p><b>Charles &amp; Joan Smith (Smith Sculptors)</b><br/><i>May Gibbs Inspiration</i>, 2003<br/>Silicon bronze<br/>City of South Perth Public Art Collection</p>                                |
| <div>4</div> <p><b>Ben Jones, Angela McHarrie and Tony Jones</b><br/><i>R/evolve</i>, 2021<br/>Aluminium<br/>City of South Perth Public Art Collection</p>                                     | <div>8</div> <p><b>Stuart Green</b><br/><i>Shoreline</i>, 2019<br/>Powder coated aluminium, timber<br/>Collection of Echelon Apartments</p>                        | <div>12</div> <p><b>Jon Tarry</b><br/><i>Aurelian Modulations</i>, 2018<br/>Stainless steel, aluminium and carbon fibre<br/>Collection of Aurelia Apartments</p>  | <div>16</div> <p><b>Yondee Shane Hansen with Art+ Coordination</b><br/><i>Karl Kep Ngoornd-iny (Fire and Water Dreaming)</i>, 2020<br/>Light and sound show<br/>City of South Perth Public Art Collection</p> |