

CITY OF SOUTH PERTH

# WASTE AND RECYCLING GUIDE 2024



9474 0777

[southperth.wa.gov.au/waste](https://southperth.wa.gov.au/waste)

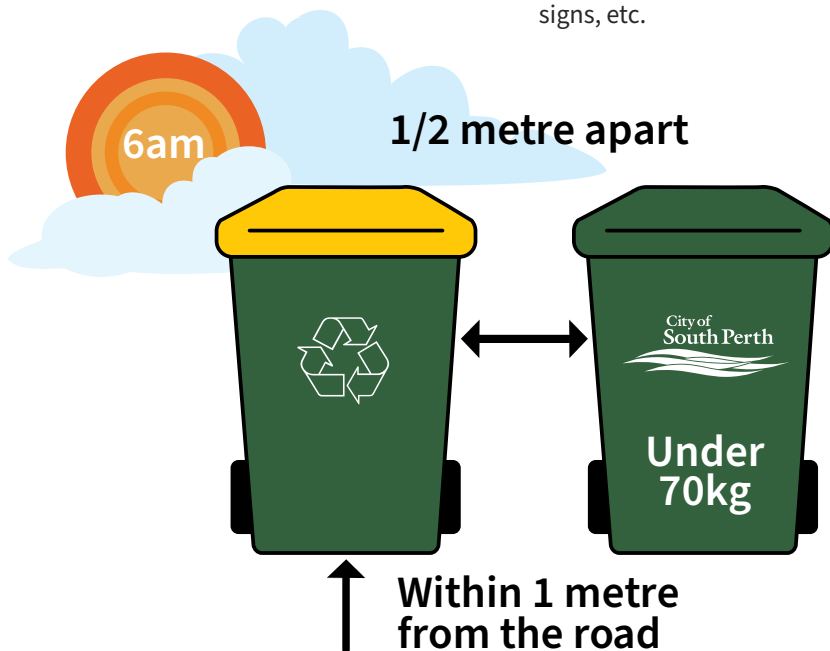
City of  
South Perth



# PUTTING MY BINS OUT FOR COLLECTION

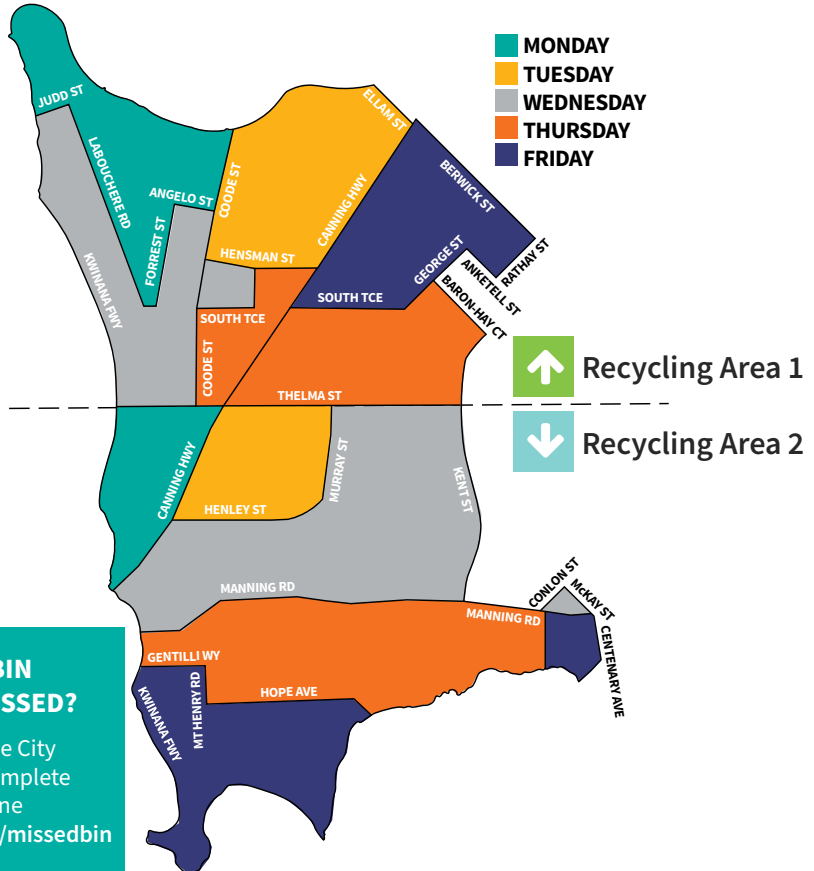
Please place your bins on the verge by 6am on the day of collection. Bins should be within one metre of the kerb ensuring the lid opens to the road. Bin lids should be fully closed to prevent unwanted pests.

Your green lid and yellow lid recycling bins should be placed half a metre (50cm) apart from each other to ensure that the hydraulic arm on the collection vehicle is able to reach, lift and empty your bins. Please ensure that your bins are clear from any obstructions such as power poles, street trees, parked cars, signs, etc.



# KERB SIDE BIN COLLECTION DAYS

Your green lid bin is collected weekly and your yellow lid recycling bin is collected fortnightly. Please refer to the map below for your bin collection day.



# WHAT CAN I PUT IN MY BINS?



## GREEN LID BIN

To help you get the most out of your rubbish collection service, store your bin in a shaded area, clean your bin regularly using hot soapy water and wrap all moist and perishable foods in newspaper, particularly in the summer months.

### What **can** I place in my green lid bin?

- Dog waste bags/nappies
- Food waste
- Garden waste – grass clippings, small branches, leaf litter and weeds
- General household waste – ceramics, clothing, plastic utensils and plates
- Glass – other than bottles and jars
- Sanitary products.

### What **can't** I place in my green lid bin?

- All building materials – bricks, sand, concrete, tiles, rocks and asbestos
- Hazardous waste – petrol, flammables, paints, solvents, batteries, chemicals or poisons
- Hot ashes or coals.



## YELLOW LID RECYCLING BIN

All recyclables should be:

- Lids off
- Loose, never in bags
- Rinsed and free from food residue.

### What **can** I place in my yellow lid bin?

- Cardboard
- Fruit juice and milk cartons
- Glass bottles and jars
- Metal jar lids
- Paper – no shredded paper
- Plastic bottles and containers (no lids)
- Steel and aluminium cans.

### What **can't** I place in my yellow lid bin?

- Aerosols
- China, porcelain or pottery
- Clothes, any textiles, or material in any bags
- Garden waste, ropes, cables, hose pipes
- Gas bottles
- Liquids and food materials
- Nappies
- Non-metal and plastic lids
- Plastic bags and cling wrap
- Plate glass or broken glass
- Polystyrene containers and meat trays.

For advice on how to dispose of materials unsuitable for kerb side bins visit the City's website, [southperth.wa.gov.au/waste](http://southperth.wa.gov.au/waste). For a full list of what items can go in your recycling bin visit [recycleright.wa.gov.au](http://recycleright.wa.gov.au).

# 2024 RECYCLING CALENDAR

## Recycling Area 1

## Recycling Area 2

Refer to kerb side bin collection days map for your recycling area.

### JANUARY

S	M	T	W	T	F	S
	1**	2	3	4	5	6
7	8	9	10	11	12	13
14	15	16	17	18	19	20
21	22	23	24	25	26	27
28	29	30	31			

### FEBRUARY

S	M	T	W	T	F	S
				1	2	3
4	5	6	7	8	9	10
11	12	13	14	15	16	17
18	19	20	21	22	23	24
25	26	27	28	29		

### MARCH

S	M	T	W	T	F	S
					1	2
3	4	5	6	7	8	9
10	11	12	13	14	15	16
17	18	19	20	21	22	23
24	25	26	27	28	29*	30
31						

### APRIL

S	M	T	W	T	F	S
	1	2	3	4	5	6
7	8	9	10	11	12	13
14	15	16	17	18	19	20
21	22	23	24	25	26	27
28	29	30				

### MAY

S	M	T	W	T	F	S
			1	2	3	4
5	6	7	8	9	10	11
12	13	14	15	16	17	18
19	20	21	22	23	24	25
26	27	28	29	30	31	

### JUNE

S	M	T	W	T	F	S
						1
2	3	4	5	6	7	8
9	10	11	12	13	14	15
16	17	18	19	20	21	22
23	24	25	26	27	28	29
30						

### JULY

S	M	T	W	T	F	S
	1	2	3	4	5	6
7	8	9	10	11	12	13
14	15	16	17	18	19	20
21	22	23	24	25	26	27
28	29	30	31			

### AUGUST

S	M	T	W	T	F	S
				1	2	3
4	5	6	7	8	9	10
11	12	13	14	15	16	17
18	19	20	21	22	23	24
25	26	27	28	29	30	31

### SEPTEMBER

S	M	T	W	T	F	S
1	2	3	4	5	6	7
8	9	10	11	12	13	14
15	16	17	18	19	20	21
22	23	24	25	26	27	28
29	30					

### OCTOBER

S	M	T	W	T	F	S
		1	2	3	4	5
6	7	8	9	10	11	12
13	14	15	16	17	18	19
20	21	22	23	24	25	26
27	28	29	30	31		

### NOVEMBER

S	M	T	W	T	F	S
					1	2
3	4	5	6	7	8	9
10	11	12	13	14	15	16
17	18	19	20	21	22	23
24	25	26	27	28	29	30

### DECEMBER

S	M	T	W	T	F	S
1	2	3	4	5	6	7
8	9	10	11	12	13	14
15	16	17	18	19	20	21
22	23	24	25**	26	27	28
29	30	31				

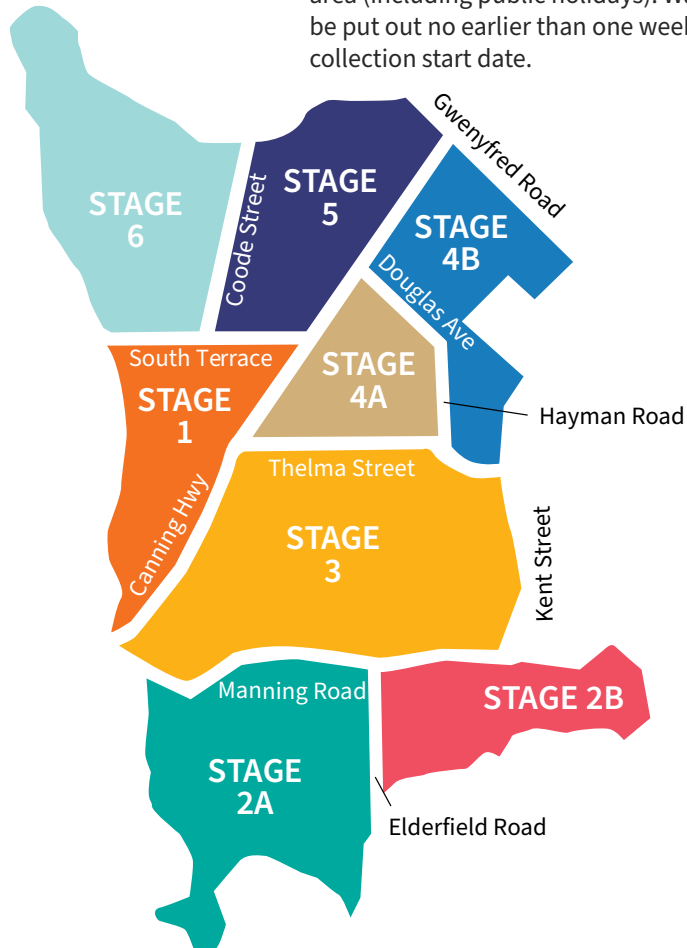
\*No collection on Good Friday 29 March, collection on Saturday 30 March.

\*\*No collection on Christmas Day and New Year's Day. Services will be delayed by a day.

# VERGE SIDE WASTE COLLECTIONS

The City of South Perth provides one hard waste and two green waste verge side collections per year for residential ratepayers only.

Items for the green and hard waste verge collection must be placed neatly on the verge by 7am on the scheduled start date for your area (including public holidays). Waste should be put out no earlier than one week before the collection start date.



STAGE	LOCATION	AUTUMN GREEN WASTE	SPRING GREEN WASTE	HARD WASTE
1	Como Beach	22 April 2024	26 August 2024	7 October 2024
2A	Manning, Salter Point, Waterford	29 April 2024	2 September 2024	14 October 2024
2B	Waterford	29 April 2024	2 September 2024	21 October 2024
3	Como, Manning, Karawara	6 May 2024	9 September 2024	28 October 2024
4A	Como, Kensington	13 May 2024	16 September 2024	4 November 2024
4B	Kensington	13 May 2024	16 September 2024	11 November 2024
5	South Perth	20 May 2024	23 September 2024	18 November 2024
6	South Perth	27 May 2024	30 September 2024	25 November 2024

Please refer to the map for exact locations.

Dates are subject to change, please refer to the website for updated information.

The City endeavours to complete collections during the week advertised, however they may carry over into the following week due to delays or unforeseen circumstances.

## VERGE SIDE COLLECTION DATES

# GREEN WASTE COLLECTION

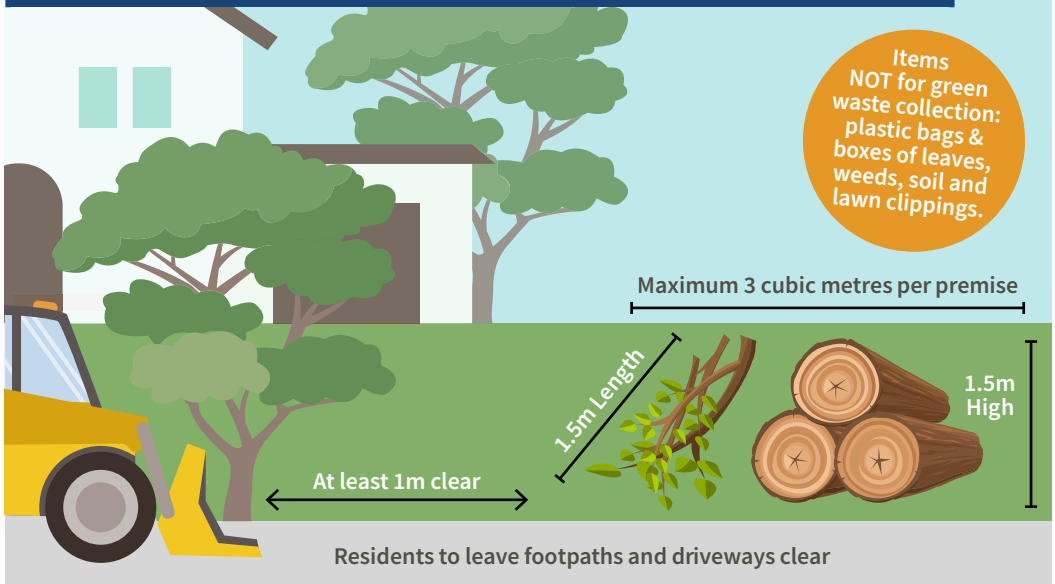
## The City WILL collect:

- Maximum 3 cubic metres per premise
- Tree branches/prunings – maximum diameter 150mm and maximum length 1.5m
- Uncontaminated green/garden waste.

## The City WILL NOT collect:

- Dug out lawn
- General junk, building or household waste
- Green waste that is contaminated by household rubbish
- Lawn clippings and leaves in bags, boxes or loose
- Tree trunks and stumps larger than 150mm in diameter or 1.5m in length.

## HOW TO CORRECTLY SET OUT YOUR VERGE COLLECTIONS | GREEN WASTE



Please ensure items are not placed near any obstruction including letter boxes, walls, water mains, electrical boxes etc. **If the green waste you set out for collection does not comply, it will not be collected.**



# HARD WASTE COLLECTION

## The City WILL collect:



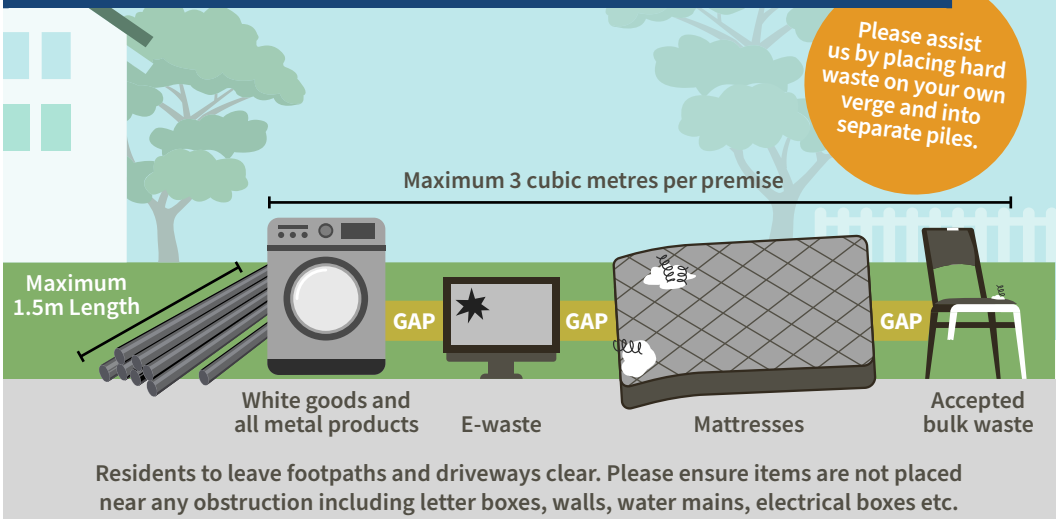
- Air conditioners
- eWaste items such as computers and televisions
- Fridges and freezers (doors must be removed)
- General junk, small electrical goods, carpet, linoleum, mattresses and metal items no longer than 1.5m
- Household furniture
- Maximum 3 cubic metres per premise
- Unwanted pine (untreated pine materials, firewood, logs, timber, furniture, etc)
- Whitegoods (stoves, dishwashers, washing machines, clothes dryers, etc).

## The City WILL NOT collect:



- Any glass such as windows, shower screens or outdoor tables
- Asbestos cement products including hardiflex/hardifence sheeting
- Bricks, rubble, sand, cement and other building waste
- Gas cylinders
- Green waste or lawn
- Household hazardous waste (oil, pesticides, solvents, chemicals, paint, etc)
- Household waste
- Items longer than 1.5m (roller doors, sofas, metal poles, timber, etc)
- Trampolines unless disassembled
- Tyres, batteries, motor vehicles (whole or parts of).

## HOW TO CORRECTLY SET OUT YOUR VERGE COLLECTIONS | HARD WASTE



## VERGE SIDE COLLECTION CONDITIONS

# CITY OF SOUTH PERTH RECYCLING CENTRE



## LOCATION

Cnr Hayman Rd & Thelma St, Como  
9474 0970

City of South Perth residents and property owners can dispose of additional waste and recycling at the City's Recycling Centre.

For more information on the items you can drop at the Recycling Centre and the associated fees, please visit the City's website [southperth.wa.gov.au/waste](https://southperth.wa.gov.au/waste).

Pre-separating your waste will assist in the unloading and recycling process.

## HOURS OF OPERATION

Open Wednesday to Sunday 8am-2pm.  
Closed Monday, Tuesday and Public Holidays.  
Last vehicle acceptance is 1.45pm on weekends.

Opening hours are subject to change during holiday periods, please refer to the website for up to date information, [southperth.wa.gov.au/recycling](https://southperth.wa.gov.au/recycling).

## ENTRY VOUCHERS

As part of the annual rubbish levy, residential ratepayers receive three entry vouchers for the Recycling Centre. These are sent out at the beginning of each financial year with your rates notices. Proof of residency may be required. Vouchers are non-transferrable.

## IMPORTANT INFORMATION

These dangerous items do not belong in any bin.



Corrosives



Fire  
extinguishers



Flammables



Fluorescent  
globes and tubes



Gas cylinders  
and aerosols



Household  
batteries



Paint



Poisons



Pesticides and  
herbicides

### FREE RECYCLING

Landfill is the last resort and we encourage residents to take recyclable items to the Recycling Centre.

The following items are accepted free of charge:

- Aerosol cans
- All scrap metal including washing machines and microwaves
- Bicycles – sturdy adult and BMX sized bikes will be donated to Bikes for Humanity
- Clean and uncontaminated cardboard
- Clean reusable clothing can be donated through the charity bins
- eWaste
- Fluorescent lighting tubes and globes
- General recyclables as per the household yellow recycling bin
- Household and vehicle batteries
- Plastic bottle top lids
- Uncontaminated used motor oil – up to 20L per day.

### HOUSEHOLD HAZARDOUS WASTE

Household hazardous waste (HHW) includes flammable liquids, petrol, paints, acids, chemicals, poisons and gas cylinders. These items cannot be disposed of in household bins. You can safely dispose of domestic quantities of HHW at the Canning Waste Transfer Station or the Armadale Landfill and Recycling Facility. For more information visit, [wasteauthority.wa.gov.au](http://wasteauthority.wa.gov.au).

## **REPORT ILLEGAL DUMPING**

Illegal dumping is a serious and growing problem in the City of South Perth. If you spot illegal dumping, please contact the City on 9474 0777, or you can report it on the City's website, [southperth.wa.gov.au/request](https://southperth.wa.gov.au/request).

One of our City Officers will investigate the complaint and if appropriate, will enforce City by-laws relating to the unlawful dumping.

## **COULD SOMEONE ELSE USE THAT?**

Support a charity today. Free collection is available for goods you no longer need. Please contact the following numbers for collection:

Good Samaritan Industries: 1300 466 372

ParaQuad Industries: 9381 0195.

This document is printed on 30 per cent recycled paper. To dispose of this guide, remove the magnet and place in your yellow lid recycling bin.



This document is available in alternative formats upon request.

9474 0777  
[southperth.wa.gov.au/waste](https://southperth.wa.gov.au/waste)

