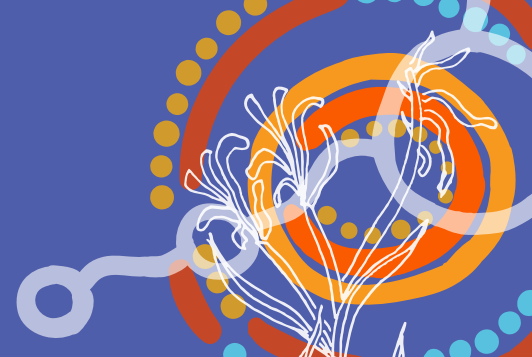


UNDERGROUND POWER

Kensington Project Area



Underground power is coming to your neighbourhood through the Network Renewal Undergrounding Program Pilot (NRUPP). This project will replace overhead distribution powerlines with underground power infrastructure.

Kensington and remaining pockets of the City will be completed in this project, bringing the last sections of Western Power's distribution network underground and completing the City's vision for underground power across the entire City.

The project is a partnership between the City and Western Power and construction is expected to commence in the last quarter of 2025.

Throughout the project you can find out more on the City's website at southperth.wa.gov.au/NRUPP

Why are we getting underground power?

Western Power determines the priority areas for underground power implementation as part of its network renewal program to improve the state's power networks. The NRUPP targets areas with high density of ageing overhead distribution assets, completed in partnership between Western Power and local governments.

Much of the City of South Perth is already enjoying the benefits of underground power as a result of three similar projects completed in partnership with Western Power across the Manning, Collier and South Perth Hurlingham areas. This project will transition the last areas of the City to underground power.

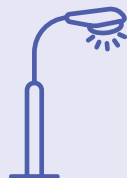
Benefits of underground power



Improved reliability and power supply, reducing faults and outages caused by storms, trees, wildlife, vandalism and motor vehicle collisions with poles.



Increased tree canopy cover with more space to plant trees and less need to prune existing street trees. This reduces maintenance costs and allows street trees to flourish, reducing urban temperatures and in turn, energy costs.



Improved public lighting and safety with upgraded, brighter, energy-efficient LED luminaires installed, contributing to improved road safety and deterring crime.



Improved street appearance by removing poles and wires and reducing hazards from fallen power lines, increasing lighting and tree canopy cover.



Potential for increased property values as a result of the above improvements to streetscapes and properties.



08 9474 0777

southperth.wa.gov.au/NRUPP

How will the project be implemented?

Western Power will be installing the new underground cabling progressively through the street verges, and from the front of each property to the meter box (except where this cable already exists) using directional drilling.

Once the underground network is connected and energised, Western Power will change each property over from the overhead to the new underground network. The old overhead infrastructure will then be removed as soon as possible. Before construction begins, and at the key stages of the project, Western Power's appointed contractor will notify residents of the planned works.

Will I be charged?

As a property owner in the project area, you will be charged as part of the project in line with the fee structure and applicable charges in the City of South Perth's 2025/26 Annual Budget. The shared funding arrangements reflect the benefits gained by property owners, the State Government and Western Power.

Details of the specific costs associated with underground power will be included in your 2025/26 Rates Notice.

YOUR SERVICE CHARGE EXPLAINED

Your Underground Power Service charge will comprise a Network Charge, and if applicable, a Connection Fee.

Your Connection Fee is based on the status of the connection between your property boundary and your meter box, as determined by Western Power.

Where connections between the front of the property and the meter box are already wholly or partially underground, this charge will be discounted according to the type of existing connection. See the table below for details.

Your Network Charge is your proportion of the project cost for connecting your property boundary to underground power. To equitably apportion each owner contribution to the project cost, Council adopted a simple model with tiered charges based on the Gross Rental Value (GRV) of the property, as detailed in the table below.

GROSS RENTAL VALUE

GRV is an estimate of the total rent (full year) that may be received from a property, as determined by Landgate. For many years GRV has been used as part of the calculation to determine your rate charges.

The GRV for your property is indicated on your rates notice. For more information about how GRV is calculated, visit the Landgate website at landgate.wa.gov.au.

PAYMENT OPTIONS

The underground power service charge is spread out over four annual instalments and will be included in the property owner's rates notice in each applicable year.

Payment plans and options will be outlined as part of your 2025/26 Rates Notice. If you are unable to meet these options, please contact the City to discuss your situation. Pensioners and seniors who currently receive a rebate on their Council rates may be entitled to a rebate against their Underground Power Network Charge in accordance with the State Government Pensioner and Seniors Rebate Scheme.

Those who qualify will have the amount included on their rates notice and it will be shown as **State Government Rebate**.

Kensington Project Area Network Charge Table

Kensington Project Area – Network Charge (per unit/dwelling)*	Total charge (levied in four annual instalments)	2025/26 charge (instalment one of four)
Residential/Commercial GRV < \$20,000	\$2,000	\$500
Residential/Commercial GRV \$20,001–\$30,000	\$3,600	\$900
Residential/Commercial GRV \$30,001–\$50,000	\$5,400	\$1,350
Residential/Commercial GRV > \$50,000	\$5,400 +20 cents in the \$ of the GRV> \$50,000	\$1,350 + 5 cents in the \$ of the GRV> \$50,000
Other - Large properties that are not held or used as Residential or Commercial	\$16,200	\$4,050

Note – If the property is sold, the outstanding network charge is recovered at property settlement.

*For a property with multiple units or dwellings on a single title, the network charge imposed on each unit or dwelling is calculated by reference to the amount of the GRV of the property divided by the number of units or dwellings.

Kensington Project Area Connection Fees

Kensington Project Area – Connection Charge (per unit/dwelling)	Total charge (levied in four annual instalments)	2025/26 charge (instalment one of four)
^Connection Fee	Between \$0–\$1,500	Between \$0–\$375

^Where connections between the front of the property and the meter box are already wholly or partially underground, this charge will be discounted according to the type of existing connection.

Note – If the property is sold, the outstanding connection fee is recovered at property settlement.

Find out more



For more information about timing of the project, site reinstatement or construction activities, email Western Power at undergroundpower@westernpower.com.au
Scan the QR code for information about payments and billing or submit a request at southperth.wa.gov.au/request

Project updates will be published on the City's website regularly throughout the project. Ensure you never miss an update by subscribing to the City's fortnightly email newsletter mySnapshot via southperth.wa.gov.au/signup