



CITY OF SOUTH PERTH  
**BUDGET AND  
RATES 2023/24**





## MAYOR'S MESSAGE



In the 2023/24 financial year, your City will be working to maintain and renew the core services

and infrastructure assets that our community relies upon.

Everyone is feeling the impact of rising costs of living. Inflation is running at the highest levels seen in decades. Budgets are stretched and everyone is looking to manage their expenses as best they can.

Like our ratepayers, the City has faced increasing costs such as electricity, fuel, construction costs and building materials (among others) as we seek to provide the fundamental services and amenity our community expects from us every day.

In developing the 2023/24 Budget, we have sought to achieve three clear goals:

- ensure the efficient and ongoing delivery of the key services and amenity that you expect from us
- continue the work that will ensure the City's long-term financial sustainability
- ensure that the average increase in Council rates does not exceed the increase in the Perth Consumer Price Index (currently 5.8 per cent).

We have worked hard to make certain every item in this Budget delivers true value to our ratepayers. We will responsibly build upon, maintain and renew our ageing assets to ensure they can be enjoyed by future generations. Essential upgrades will be made to roads and footpaths to keep them safe.

In the last few years, the City has increased its efforts to secure external funding for various projects, to deliver more for our community whilst reducing the burden on ratepayers. The City continues to advocate on behalf of our community for local projects. I am particularly pleased that a significant number of the capital works projects in this budget will be partly or fully funded by external grants. This is a credit to the City's sterling work in advocating for our district.

As your Mayor, I am confident this Budget delivers the responsible financial management you expect from your local government, while focusing on what is most important to our community.

I am proud to present the 2023/24 Annual Budget and will continue to work towards our community's vision for a City of active places and beautiful spaces.

**Greg Milner**  
**Mayor, City of South Perth**

## 2023/24 RATES

**Council has approved an increase in rates revenue of 5%, which is below the prevailing Perth CPI of 5.8% and National CPI of 7%.** This marks the fifth consecutive budget where the City's rates movements have either been equal to or below Perth CPI, despite the impact of inflation and high interest rates. With inflation and interest rates continuing to rise, this year's budget focuses on improving the City's financial position at a time when economic uncertainty remains high.

Rates remain the City's most significant source of operating revenue. The City invests this revenue in our community with renewed and new infrastructure and facilities, as well as upgrades and improvements to existing infrastructure such as parks, roads, paths, drainage and river walls.

Additionally, the City provides a range of services for our community including libraries; weekly waste and fortnightly recycling services; verge side waste collections; community events; parks, playgrounds and sporting facilities; community facilities; George Burnett Leisure Centre; senior citizens centres; and community safety initiatives.

## YOUR RATES AND GROSS RENTAL VALUE (GRV)

Gross Rental Value (GRV) is an estimate of how much rent your property might earn each year. The GRV of your property is set by Landgate and provided to local governments to calculate rates.

Every three years, Landgate revalues properties in the metropolitan area. Revaluation of properties in the City has taken place in 2023 and will directly impact the amount you pay in rates.

Due to the revaluation, the rate revenue rise of 5 per cent will not apply evenly across all properties. This will result in some property owners experiencing an increase in rates above 5 per cent, some experiencing an increase of below 5 per cent, and in some instances property owners will be paying lower rates than last year.

## HOW YOUR RATES ARE CALCULATED

Rates are calculated based on the revenue needed to deliver core community and infrastructure services. Individual ratepayers pay a proportionate share of the cost of providing these services and infrastructure, based on their property's GRV.

### STEP 1 TOTAL RATES REQUIRED TO RUN THE CITY OF SOUTH PERTH



**Cost of**  
running  
the City

–



**minus revenue** from  
other sources other than  
rates (grants, rentals,  
hire/service charges)

=



**equals revenue**  
required from  
rates to run  
the City

### STEP 2 HOW THE RATE IN THE DOLLAR IS CALCULATED



**revenue**  
required  
from rates

÷



**divided by the combined**  
rental value of all rateable  
properties (GRV)

=



**equals**  
the rate in  
the dollar\*

\*subject to the minimum rate

### STEP 3 WHAT RATES YOU PAY



**the rate in**  
the dollar

x



**multiplied** by your  
property's value, set  
by the Gross Rental  
Value (GRV)

=



**equals** your  
rates portion  
to keep the  
City running



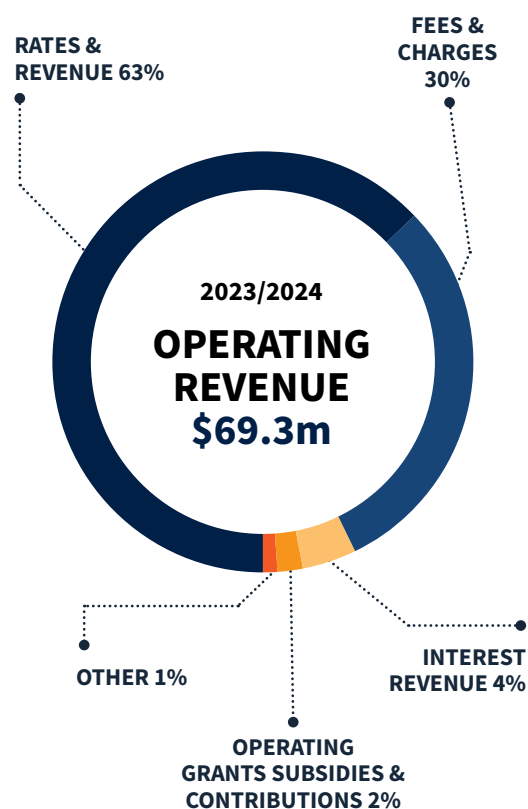
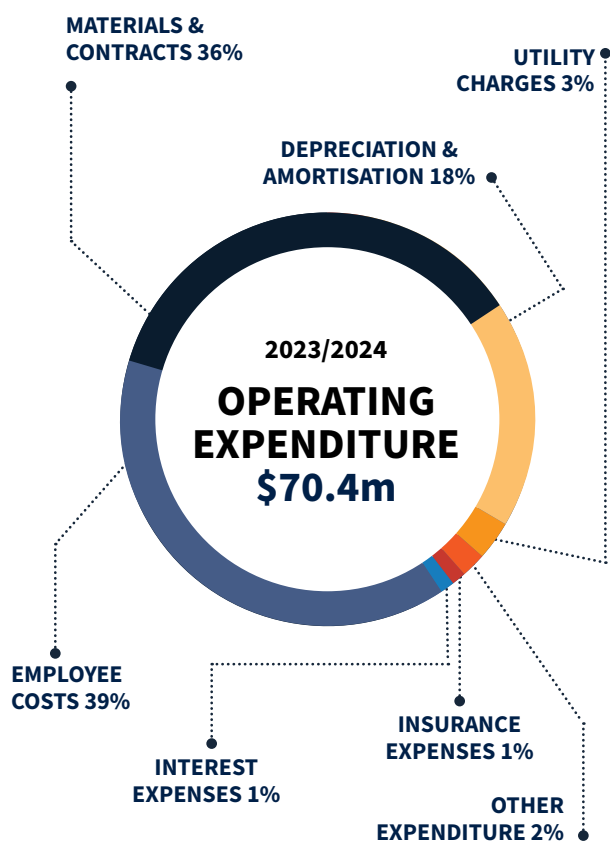


## IMPROVING CITY FINANCES

With inflation and interest rates continuing to rise, this year's Budget focuses on improving the City's financial position. Now in the second year of a three-year plan to improve the City finances, the City is on-track to achieve a return to surplus which will enable the funding of future asset renewals.

Despite the economic pressures of the past two years, the City has continued to keep expenditure growth and rate increases below CPI. The 2023/24 forecast operating expenditure of \$70.4 million enables the City to continue on its path to build long-term financial sustainability while delivering the high levels of service expected by our community.

## EXPENDITURE AND REVENUE BREAKDOWN





## HOW YOUR RATES CONTRIBUTE TO OUR COMMUNITY INFRASTRUCTURE

The 2023/24 Capital Works Program with a total spend of \$14.76 million (m) is funded from grants/trade-ins (\$2.69m), reserves (\$0.97m) and municipal funds (\$11.1m). It has a strong focus on asset replacement and renewal.

### CAPITAL WORKS BUDGET INCLUDES



**\$5.10M**

**PATHWAYS & ROADS**



**\$430K**

**LOCAL ROAD TRAFFIC  
MANAGEMENT**



**\$2.61M**

**BUILDINGS**



**\$290K**

**WASTE MANAGEMENT**



**\$1.71M**

**PARKS & RESERVES**



**\$143K**

**SECURITY**



**\$915K**

**DRAINAGE INFRASTRUCTURE**



**\$112K**

**TECHNOLOGY**



**\$900K**

**FORESHORE &  
NATURAL AREAS**



**\$50K**

**SOLAR LIGHTING**



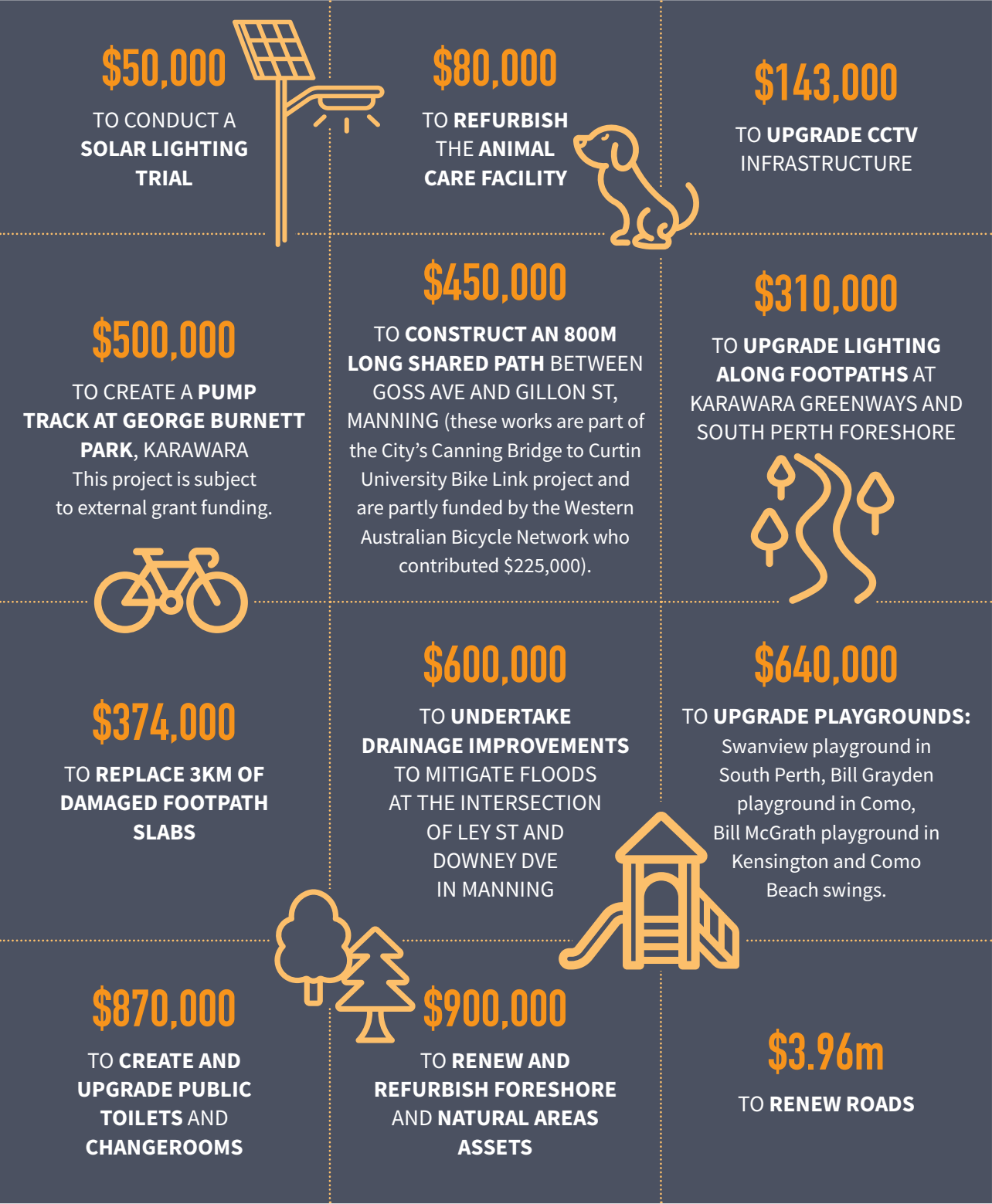
**\$180K**

**STREETSCAPES**





# BUDGET HIGHLIGHTS





## HOW TO PAY YOUR RATES?

From 1 July 2023, the City of South Perth will no longer accept cash payments at the Civic Centre. For the safety and security of employees and customers, we are encouraging people to pay their rates securely online via **[southperth.wa.gov.au/pay](https://southperth.wa.gov.au/pay)**. If you would prefer to pay your rates in cash you can still do so at any Australia Post Office, including six locations in our City:

- Shop 5, 21 Mends Street, South Perth
- 59 Angelo Street, South Perth
- 262b Canning Highway, Como
- Shop 4, 25 Preston Street, Como
- Shop 22, Waterford Plaza, Shopping Centre, 31 Walanna Drive, Karawara
- 15 Welwyn Avenue, Manning

Visit **[auspost.com.au/locate](https://auspost.com.au/locate)** to find your nearest location or call Australia Post on 13 POST (13 7678).

## OTHER CHARGES

### WASTE VOUCHERS AND WASTE SERVICE CHARGE

The rates notice will include Waste Service Charges for the year ending 30 June 2024. For a residential ratepayer, typically:

- a standard Waste Service Charge of \$375 (one of the lowest in the metropolitan area) or,
- a non-rateable property Waste Service Charge of \$516.

This charge includes:

- weekly rubbish collection
- fortnightly recycling collection
- three verge-side waste collections per year.

As a residential ratepayer, you will receive two green waste and one general waste voucher to the City's Recycling Centre. The vouchers are at the bottom of your rates notice and valid until **31 July 2024**.

### EMERGENCY SERVICES LEVY

The Emergency Services Levy (ESL) is a compulsory charge for all property owners, issued by the State Government.

In its 2023/24 Budget, the State Government imposed an approximate 5 per cent increase to the ESL. This year's GRV revaluation will impact the calculation of the ESL charge similar to rates. Some ratepayers will experience an increase in ESL above 5 per cent, some will experience an increase below 5 per cent and in some instances property owners will be paying lower ESL than last year.

The ESL funds WA's fire and emergency services including fire stations, volunteer fire brigades, State Emergency Services (SES) units and the Volunteer Marine Rescue Service.

Local governments are required to include the levy in their rates accounts and collect it on behalf of the Department of Fire and Emergency Services (DFES). ESL charges are calculated based on several criteria including the ESL category your property falls under and your property's Gross Rental Value, subject to minimums and maximums.

For more information contact DFES at **[dfes.wa.gov.au](https://dfes.wa.gov.au)**.



## STATE GOVERNMENT REBATE

Pensioners or seniors who own and occupy their property may be entitled to a rebate. To be eligible an applicant must be the owner and reside in the property on 1 July 2023.

### Pensioner rebate applicable if you:

- receive a pension or hold a valid Pensioner Concession Card, or State Concession Card or Seniors Card with Commonwealth Seniors Health Card.

The rebate available to eligible pensioners is capped at a maximum of \$750 for rates and if applicable, up to a 50 per cent rebate on underground power and ESL. Eligible pensioners may apply to defer their rates, underground power charge and ESL.

### Seniors rebate applicable if you:

- hold a valid Seniors Card.

The rebate for Seniors Card holders on local government rates is capped at \$100 per household and 25 per cent on ESL.

The State Government administers the law regarding pensioner and senior concessions. For more information, visit [southperth.wa.gov.au/rates](https://southperth.wa.gov.au/rates).

## FINANCIAL HARDSHIP

City of South Perth ratepayers, residents, businesses, community groups and clubs experiencing financial hardship may be eligible for Financial Hardship Assistance under the City's Financial Hardship Policy.

Financial hardship means that a person or organisation is having trouble meeting their financial obligations. They have the intention but not the financial capacity to pay debts owed to the City.

Financial Hardship Assistance is available for debts owing to the City including rates, Emergency Services Levy, Rubbish Service Charge and Fees and Charges, subject to eligibility. To find out more visit [southperth.wa.gov.au/financialhardship](https://southperth.wa.gov.au/financialhardship).



## eRATES

Register for eRates to receive your future annual rates notice and instalment reminders by email. Scan the QR code to register.