



CITY OF SOUTH PERTH

BUDGET AND RATES 2025/26



City of
South Perth



MAYOR'S MESSAGE



I'm proud to present the City of South Perth's 2025/26 Budget – a responsible and balanced plan that safeguards our community's amenity today, while making proper financial provision for tomorrow.

This year marks our seventh consecutive year of keeping rate increases at or below Perth's CPI, with a modest 2.8% rate rise adopted for 2025/26.

Your Council continues to be mindful of the cost-of-living pressures faced by our community. That said, keeping rates low is just one part of the job.

The City manages \$800 million in public assets, including our roads, parks, libraries, recreation facilities and drainage systems. These assets wear out over time and require regular maintenance, renewal and eventual replacement. That's why strong financial management is so important.

I'm proud to report that this budget continues the City's recent record of sound financial management, which has seen significant operating surpluses over the past three years.

Despite some significant and unavoidable one-off large expenditure items in the coming financial year, this disciplined approach to the City's finances has allowed us to forecast a sustainable breakeven budget for the 2025/26 financial year, while continuing to steadily increase our financial reserves.

With an operating budget of \$86.15 million and a capital expenditure budget of \$31.62 million, we're investing more than ever in asset renewal and maintenance – not just to keep things running, but to improve the spaces where we live, work and play.

Budget highlights include:

- \$12.5 million to upgrade building facilities at Collier Park Golf Course
- \$1.4 million to upgrade irrigation and lighting at Sir James Mitchell Park
- \$1 million for the restoration of the Coode Street Foreshore river bank
- \$963,000 to construct a public toilet including a Changing Places facility at Neil McDougall Park
- \$463,000 as an initial phase for the Hurlingham Living Stream project
- \$3.5 million to deliver various road improvements
- \$300,000 to activate Moresby Street Centre
- \$265,000 to deliver festive lighting
- \$200,000 for Christmas decorations

There's more to do, but I am proud of the continued improvement in the City's financial sustainability. The work we're doing will safeguard our community's amenity for the future.

I'd like to thank City staff and my fellow Elected Members for their ongoing dedication to delivering this long-term vision for the community we proudly serve.

Greg Milner
Mayor, City of South Perth

2025/26 RATES

This year's budget focuses on maintaining and renewing our wide range of City facilities and providing quality services to our ratepayers and residents.

Rates continue to be the primary source of operating revenue for the City. This year there has been a modest rate rise of 2.8%, which will ensure we can continue to deliver our services without compromising our financial sustainability. This revenue will be invested back into the community to ensure our City continues to be a place of active places and beautiful spaces.

Much more than just roads, rates and rubbish, the City of South Perth is dedicated to providing quality services to meet the diverse needs of our community. This includes maintaining the magnificent South Perth Foreshore and the City's many other parks, playgrounds and reserves, providing access to libraries, seniors centres and recreation facilities, staging community events, providing grants to community groups, and more.

YOUR RATES AND GROSS RENTAL VALUE (GRV)

Gross Rental Value (GRV) is an estimate of how much rent your property might earn each year. The GRV of your property is set by Landgate and provided to local governments to calculate rates.

HOW YOUR RATES ARE CALCULATED

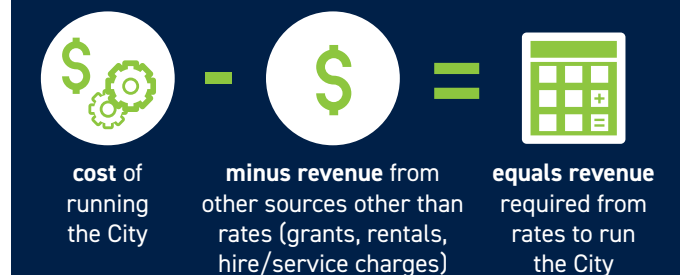
Rates are calculated based on the revenue needed to deliver core community and infrastructure services. Individual ratepayers pay a proportionate share of the cost of providing these services and infrastructure, based on their property's GRV.

The rate in the dollar is the amount calculated by the City to meet its budget requirements.

For 2025/26, the City's general rate in the dollar is **0.077667**. The minimum rate is set at **\$1,244**.

The City's rates continue to remain low in comparison with other similar sized inner-city local governments.

STEP 1 TOTAL RATES REQUIRED TO RUN THE CITY OF SOUTH PERTH



STEP 2 HOW THE RATE IN THE DOLLAR IS CALCULATED



STEP 3 WHAT RATES YOU PAY



*subject to the minimum rate

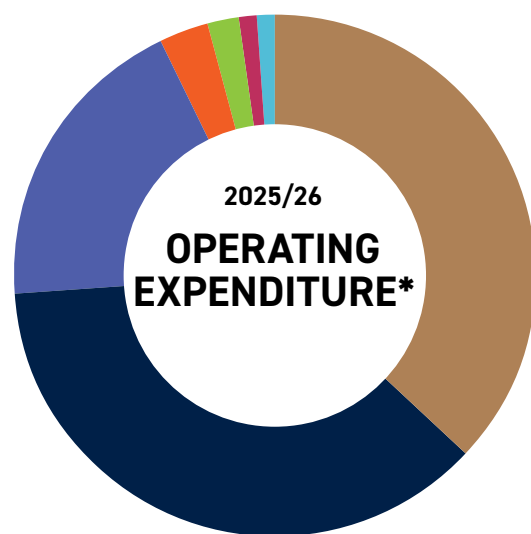
PLANNING FOR OUR FUTURE

This year's budget continues to focus on improving the City's long term financial position. In 2025/26 the City has kept rate increases in line with CPI. It has taken a conservative approach amid global economic uncertainty, resulting in a breakeven budget with no significant operating loss or surplus.

The operating expenditure of \$86.15 million will enable the City to deliver a high level of service to our community while also building on our long-term financial sustainability. The City will continue to investigate alternative revenue sources to reduce its reliance on rates and improve its ability to fund asset renewals into the future.

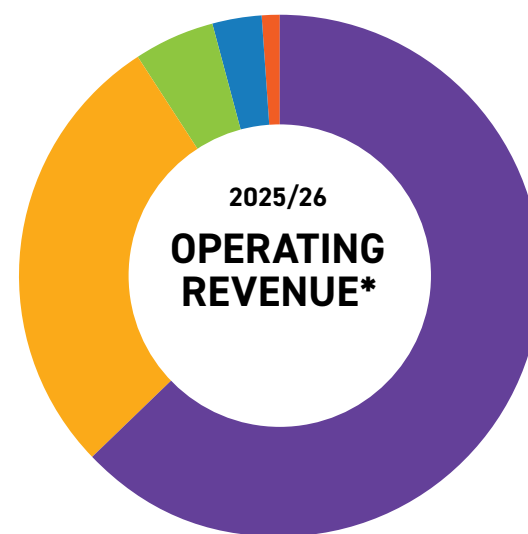
The budgeted operating result and increased capital expenditure, with a strong focus on renewal, have been achieved while increasing reserve funds. These reserves are primarily earmarked for asset renewal, and future infrastructure projects such as indoor sports courts and the Challenger Reserve masterplan.

EXPENDITURE AND REVENUE BREAKDOWN



| | |
|-----------------------------|-----|
| MATERIALS & CONTRACTS | 37% |
| EMPLOYEE COSTS | 37% |
| DEPRECIATION & AMORTISATION | 19% |
| UTILITY CHARGES | 3% |
| OTHER EXPENDITURE | 2% |
| FINANCE CHARGES | 1% |
| INSURANCE EXPENSES | 1% |

*Excluding underground power



| | |
|---|-----|
| RATES REVENUE | 63% |
| FEES & CHARGES | 28% |
| INTEREST REVENUE | 5% |
| OPERATING GRANTS SUBSIDIES & CONTRIBUTIONS | 3% |
| OTHER REVENUE | 1% |

YOUR RATES AT WORK

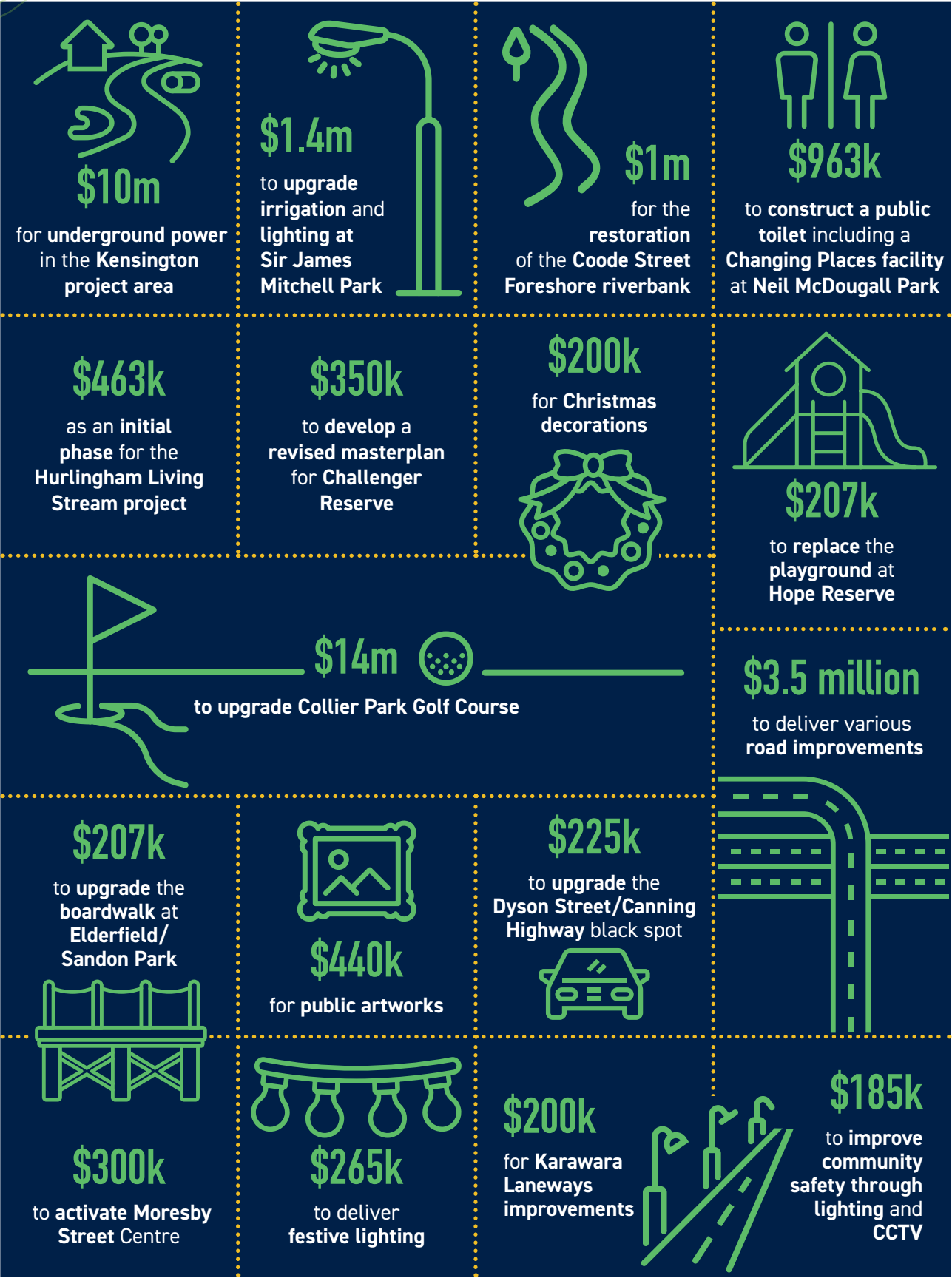
With a total spend of \$31.62 million, the 2025/26 Capital Works Program has a strong focus on asset renewal to ensure the City's \$800 million worth of assets and infrastructure are maintained for the community. Efficient use of City resources allows us to provide essential infrastructure and services to our community, while ensuring long-term costs remain low.

OUR CAPITAL WORKS BUDGET INCLUDES



BUDGET HIGHLIGHTS

Beautiful places and active spaces | Safer roads | Connected communities



WASTE VOUCHERS AND WASTE SERVICE CHARGE

Your rates notice will include Waste Service Charges for the year ending **30 June 2026**.

For a residential ratepayer, this is typically:

- a standard Waste Service Charge of \$430 (one of the lowest in the metropolitan area) or,
- a non-rateable property Waste Service Charge of \$595.

This charge includes:

- 1 x 240L green lid general domestic waste bin collected weekly
- 1 x 240L yellow lid recycling bin collected fortnightly
- three pre-booked verge waste collections per year with Verge Valet™.

This year, a new pre-booked service has been introduced for verge collections. Residents can pre-book two green waste verge collections and one hard waste collection throughout the year using the Verge Valet™ service. Visit vergevalet.com.au for more information.

To assist with the transition to this new service, residential ratepayers will receive additional entry vouchers to the City's Recycling Centre on their 2025/26 rates notice.

You will receive four green waste and two general waste entry vouchers (three more than last year). The vouchers are at the bottom of your rates notice and valid until **31 July 2026**. Each voucher can be used up to four times for green waste and two times for general waste disposal, so please retain your vouchers after each use.

EMERGENCY SERVICES LEVY

The Emergency Services Levy (ESL) is a compulsory charge for all property owners, issued by the State Government.

The ESL funds WA's fire and emergency services including fire stations, volunteer fire brigades, State Emergency Services (SES) units and the Volunteer Marine Rescue Service. Local governments are required to include the levy in their rates accounts and collect it on behalf of the Department of Fire and Emergency Services (DFES). ESL charges are calculated based on several criteria including the ESL category your property falls under and your property's Gross Rental Value, subject to minimums and maximums.

For more information contact DFES at dfes.wa.gov.au

HOW TO PAY YOUR RATES

Pay online – Payments can be made quickly and securely online by visiting southperth.wa.gov.au/pay

BPAY – Use online or phone banking to make a safe and secure payment from your bank account. Your rates notice will include your individual reference number.

Australia Post – Present your rates notice to any Australia Post Office to make payment with cash, credit or debit card. Or call 13 18 16 to pay your rates over the phone.

In-person – Credit, debit card and cheque payments can be made in-person at the City of South Perth's Civic Centre. **Cash payments are no longer accepted at the City.**

For more information, visit southperth.wa.gov.au/rates



STATE GOVERNMENT REBATE

Pensioners or seniors who own and occupy their property may be entitled to a rebate. To be eligible, an applicant must be the owner and reside in the property on 1 July 2025.

Pensioner rebate

This rebate is applicable if you receive a pension or hold a valid Pensioner Concession Card, or State Concession Card or Seniors Card with Commonwealth Seniors Health Card.

The rebate available to eligible pensioners is capped at a maximum of \$750 for rates and, if applicable, up to a 50% rebate on underground power and ESL. Eligible pensioners may apply to defer their rates, underground power charge and ESL.

Seniors rebate

This rebate is applicable if you hold a valid Seniors Card. The rebate for Seniors Card holders on local government rates is capped at \$100 per household and 25% on ESL.

The State Government administers the pensioner and senior concessions.

For more information, visit southperth.wa.gov.au/rates

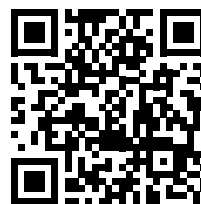
FINANCIAL HARDSHIP

City of South Perth ratepayers, residents, businesses, community groups and clubs experiencing financial hardship may be eligible for Financial Hardship Assistance under the City's Financial Hardship Policy.

Financial hardship means that a person or organisation is having trouble meeting their financial obligations. They have the intention but not the financial capacity to pay debts owed to the City.

Financial Hardship Assistance is available for debts owing to the City including rates, Emergency Services Levy, Rubbish Service Charge and Fees and Charges, subject to eligibility.

To find out more visit southperth.wa.gov.au/financialhardship



Go Paperless

Register for eRates to receive your future annual rates notice and instalment reminders by email. Scan the QR code to register.

Civic Centre | 9474 0777

#discoversouthperth | southperth.wa.gov.au



City of
South Perth

